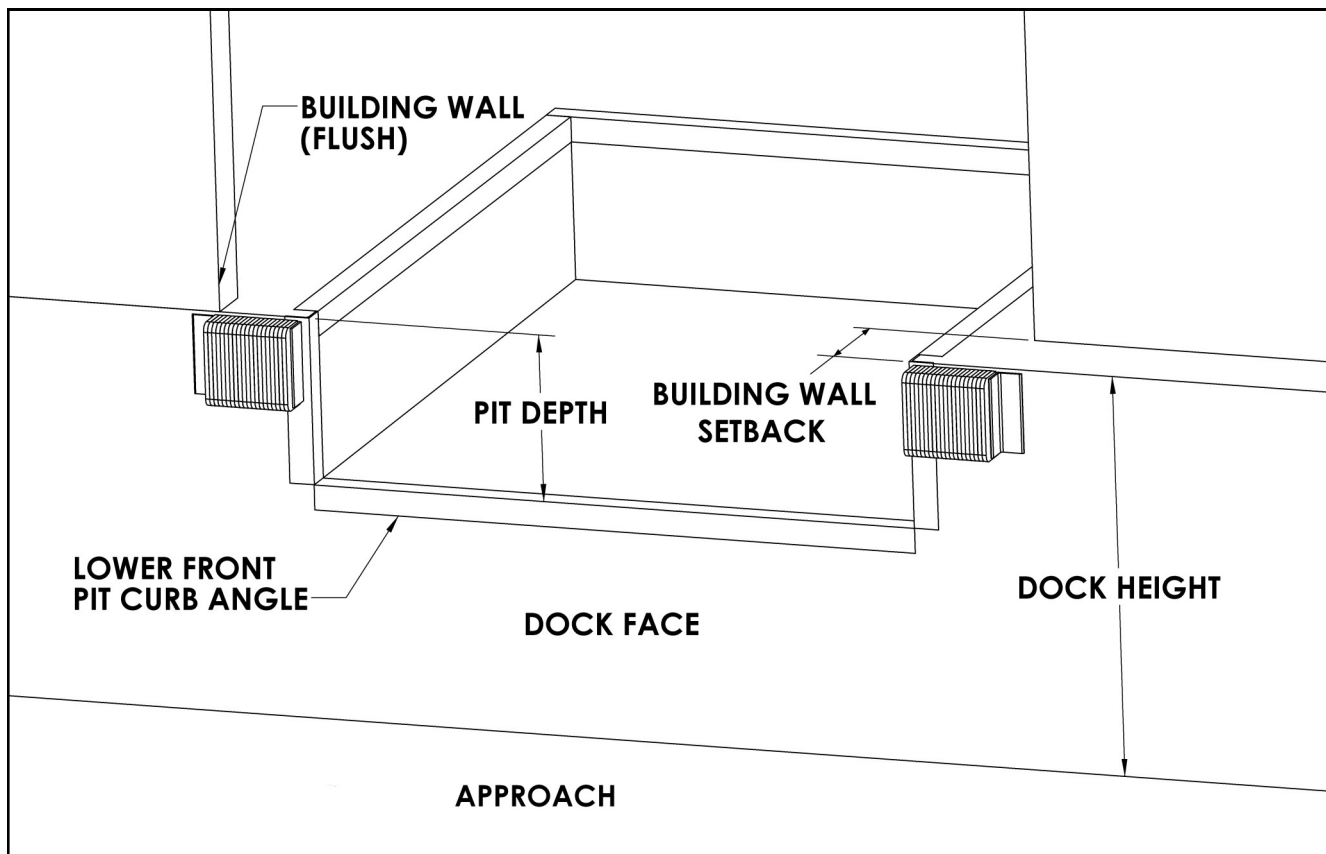




Survey Information

INSTRUCTIONS

1. Survey must be completed based upon conditions at time of installation
2. Dock face must be clear of any obstructions prior to installation of the Lock & Load™.
3. Lights and signs must be mounted in full view of forklift and tractor-trailer operations.
4. Examples of why bracketing may be required:
 - A. Sloped approach greater than 1/2" per foot.
 - B. Bumper projection over 4". (Bumpers are manufactured to nominal sizes; actual projection must be verified.)
 - C. Insufficient embedded front pit curb angle
 - D. 24" deep pits.
 - E. Other than solid concrete dock face (6" thick minimum).
5. Hollow "D" and flex steel bumpers not acceptable.



Customer: _____ NOVA #: _____
 Surveyed by: _____ Date: _____ Quantity: _____

1. Dock/Door #'s: _____

2. Is the Dock Leveler Truck Activated? If yes, consult NOVA.

3. Lip Length: _____ Inches **NOTE:** Enter "0" for no leveler.

4. Safety Lip

Yes No

5. Pit Depth/Front Frame Depth: _____ Inches

NOTE: Consult NOVA if leveler is on self standing frame.

Enter "0" if no leveler or "EOD" for EOD type leveler (refer to EOD drawing on last page).

6. Dock Height: _____ Inches

7. Dock Face/Lock & Load Mounting Surface

<input type="checkbox"/> Concrete, solid tilt-up precast, min 6 thick	<input type="checkbox"/> Embed mounting plate, minimum 6" thick concrete
<input type="checkbox"/> Brick/cinder block, hollow tilt-up/precast	<input type="checkbox"/> Stub wall (partial wall w/open pit)
<input type="checkbox"/> Legs/Self Standing Frames -(Consult Factory)	<input type="checkbox"/> Other

8. Is the pit floor material concrete?

Yes No

9. If pit does not exist, is the dock floor concrete?

Yes No

10. Is there an existing pit floor plate bracket?

Yes No

11. Bumper Projection: _____ Inches

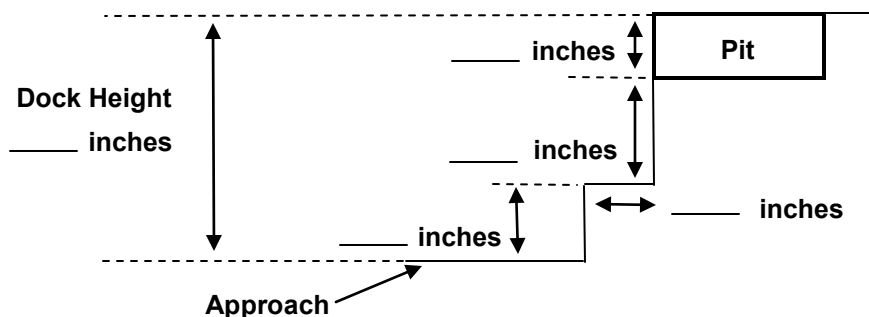
12. Lower Front Pit Curb Angle

3 x 3 4 x 4 None Pan Material Other

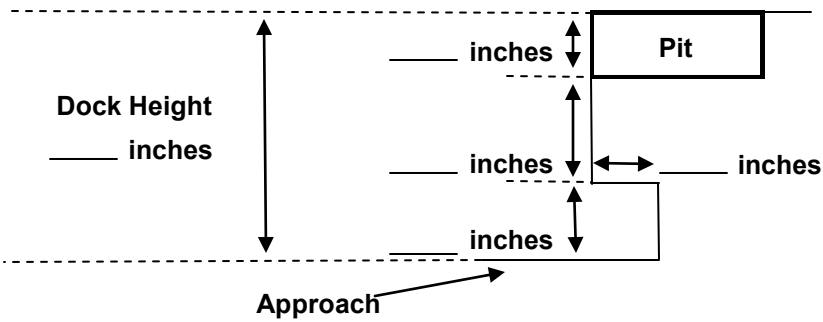
13. Wall Position to Dock Face

Flush Protruding Set Back

14. Setback Layout:



15. Cantilever (Protruding) Layout:



16. Sub-frame Position to Dock Face:

- Flush
 Protruding
 Set Back
 Not Applicable

17. Sub-frame Set back or Protrusion: _____ Inches

18. Will Yard Jockeys be Used:

- Yes
 No

19. Drive/Approach Material at Dock Face:

- Concrete
 Asphalt
 Gravel/Dirt
 Other: _____

20. Is the Approach Level or Sloped?

- Level (**Note:** If Level, disregard questions A, B & C below)
 Sloped (**Note:** If Sloped, complete questions A, B & C below)

