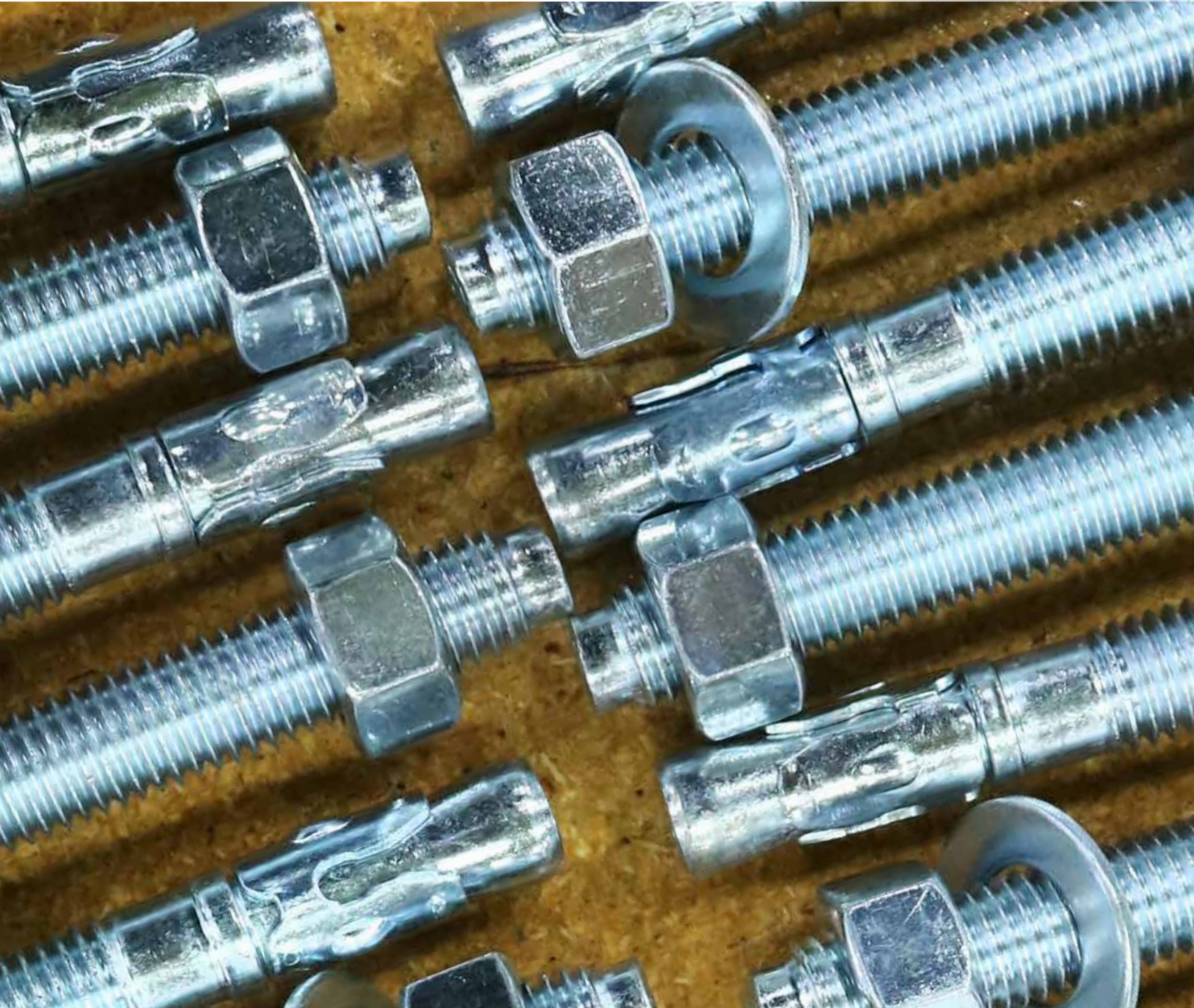


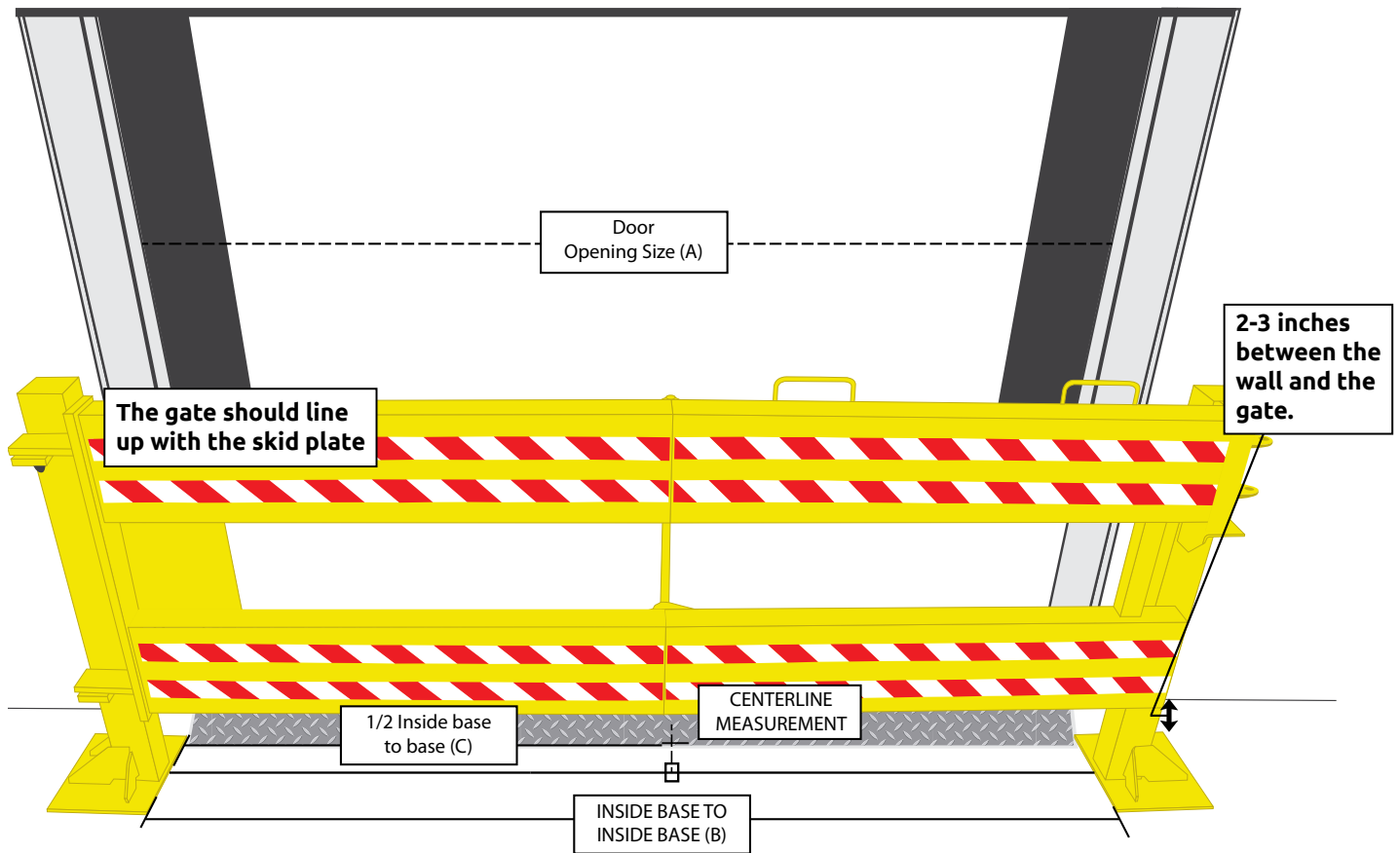
INSTRUCTION MANUAL



DEFENDER GATE™ 10 & 20



DEFENDER GATE
SAFETY BARRIER SYSTEMS



*Defender Gate™ 20 shown

Defender Gates Sizing Chart

Opening Size (A)	Inside base to inside base (B)	1/2 from Base to Base (C)	Defender Gate Size
6 Foot	72.250 Inches	36.1250 Inches	6 Foot
8 Foot	96.250 Inches	48.1250 Inches	8 Foot
9 Foot	108.250 Inches	54.1250 Inches	9 Foot
10 Foot	120.250 Inches	60.1250 Inches	10 Foot
12 Foot	144.250 Inches	72.1250 Inches	12 Foot

The **Defender Gate™ 10 or 20** arrives in three pieces securely wrapped and attached to a pallet. All hardware is included. Congratulations on making your loading dock the safest in the world!

Shipment Contains: 1 box hardware, 1 latch post bollard, 1 hinge post bollard, 1 gate, 1 instruction manual



HARDWARE:

- 14 - Wedge anchors 5/8" x 6"
- 14 - Flat washers
- 14 - Nuts
- 2 - Hitch pins
- 1 - 5/8" Drill bit
- 1 - Black sharpie marker
- 1 - Padlock
- 1 - Allen wrench



REQUIRED TOOLS:

- Hammer drill
- Level
- Tape measure
- 3/4" Wrenches or socket wrench
- Hammer

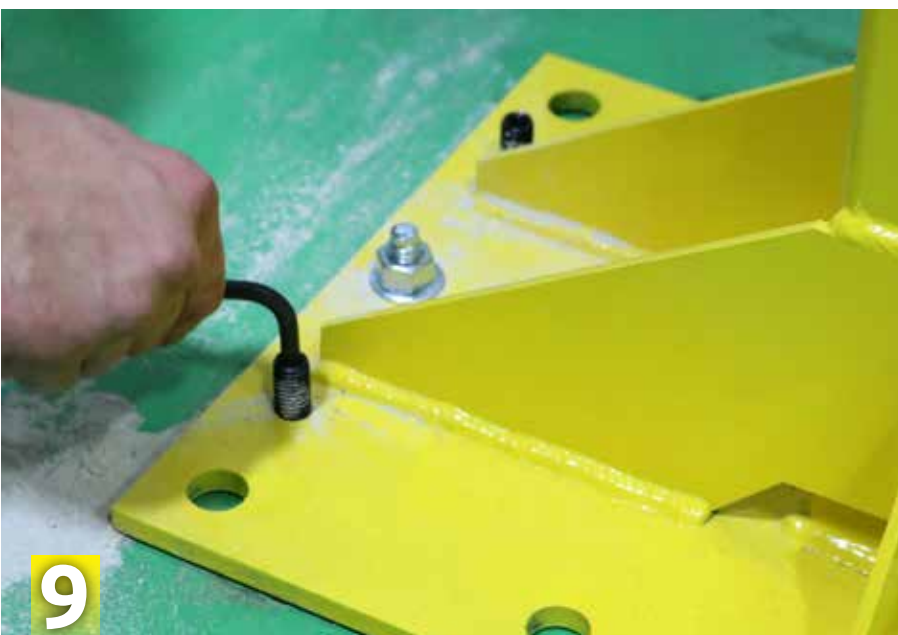
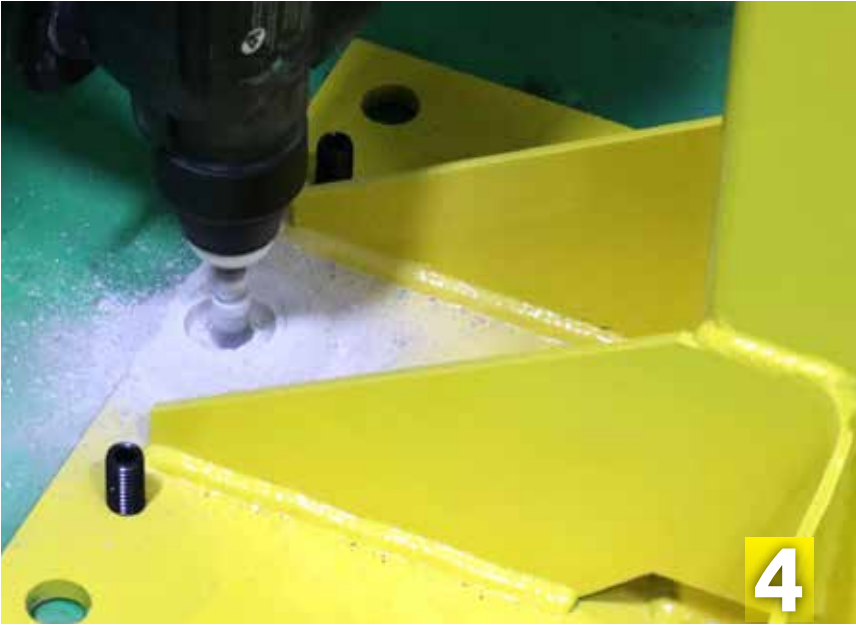
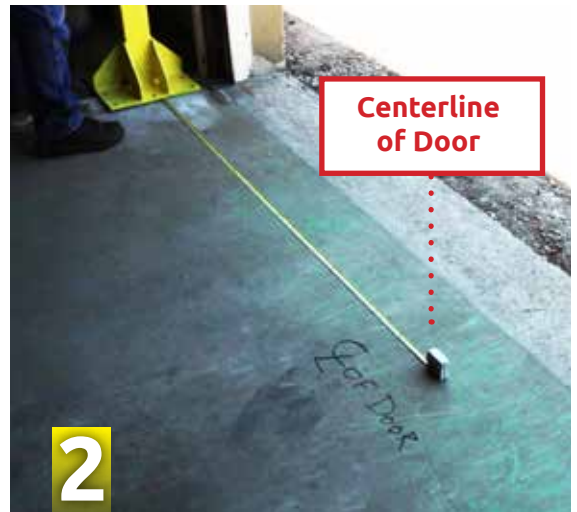
INSTRUCTIONS: PART ONE

Installing the bollards.

Tools: Drill, level, tape measure, 3/4" socket wrench, hammer, allen wrench.

Begin with **HINGE BOLLARD**.

- 1 Determine the size of the door opening. (A)
- 2 Divide this measurement in half to find the center line of the door opening and set the inside edge of the HINGE BOLLARD baseplate to (C), 1/2 of the centerline measurement.
- 3 Make sure you have **at least 2-3 inches** from the wall or door dock rails.
- 4 Drill the holes for the anchor bolts with a minimum depth of 5 inches using the bollard as a guide.
- 5 Place washer and nut on bolt ***before striking***.
- 6 With bollard in place, insert 7, 5/8" x 6" anchor bolts with a hammer.
- 7 Measure distance (B) from inside edge of the HINGE BOLLARD baseplate to the inside edge of the LATCH BOLLARD baseplate. Make sure the distance from the wall or frame is the same as the HINGE BOLLARD.
- 8 Repeat steps 3-7 to install LATCH BOLLARD.
- 9 Level both bollards using the supplied leveling screws and allen wrench.
Begin with HINGE BOLLARD.
 - A. Place level on far left side to check plumb.
 - B. Tighten screws to make level.
 - C. Place on 90 degree side from previously leveled.
 - D. Loosen/tighten nuts on bollard to level.
 - E. Repeat on latch bollard.



INSTRUCTIONS: PART TWO

Installing the Gate.

Tools: Drill, level, 3/4" wrenches or socket wrench.

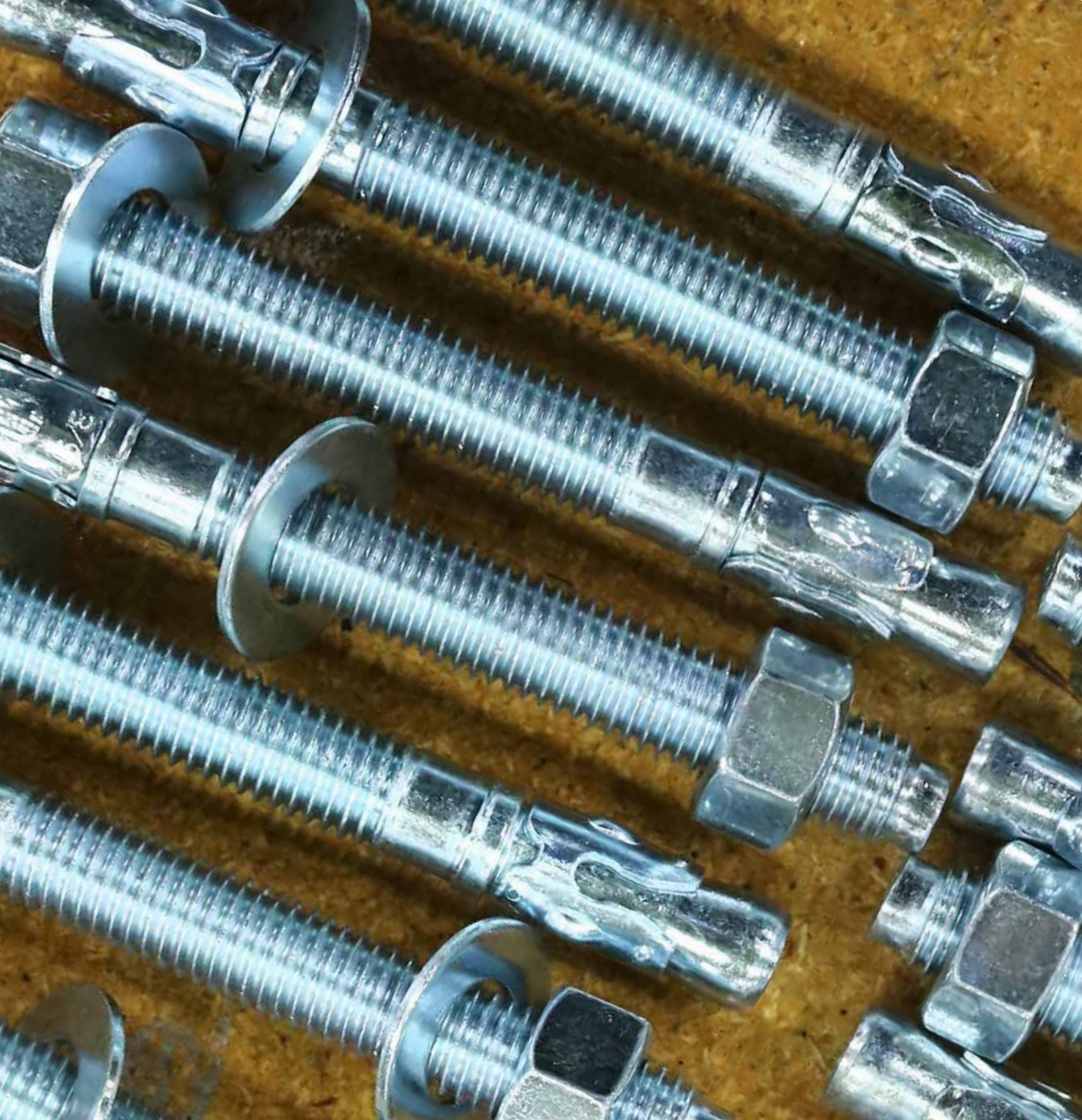
Optional: Forklift. If a forklift is not available, an extra helper is recommended to install the gate with less effort.

- 1** Remove the zip tie that holds thrust washer to bollard, ensuring that washer is in place on hole for pivot pin.
- 2** With the GATE still folded, insert gate pivot pins into the HINGE BOLLARD holes. Be sure the handles are on top and stripes are facing you. Move GATE slightly back & forth until GATE is firmly seated.
- 3** Insert hitch pins into the 2 pivot pins on the GATE.
- 4** Open gate and check leveling at multiple points.
- 5** Close the gate, drop the closure pin in, and lock. A slight leveling adjustment may be necessary to assure a smooth fit in the LATCH BOLLARD.

You're done! The gate is now ready to secure your area.







DEFENDER GATE

SAFETY BARRIER SYSTEMS

1-800-236-7325 | www.novalocks.com