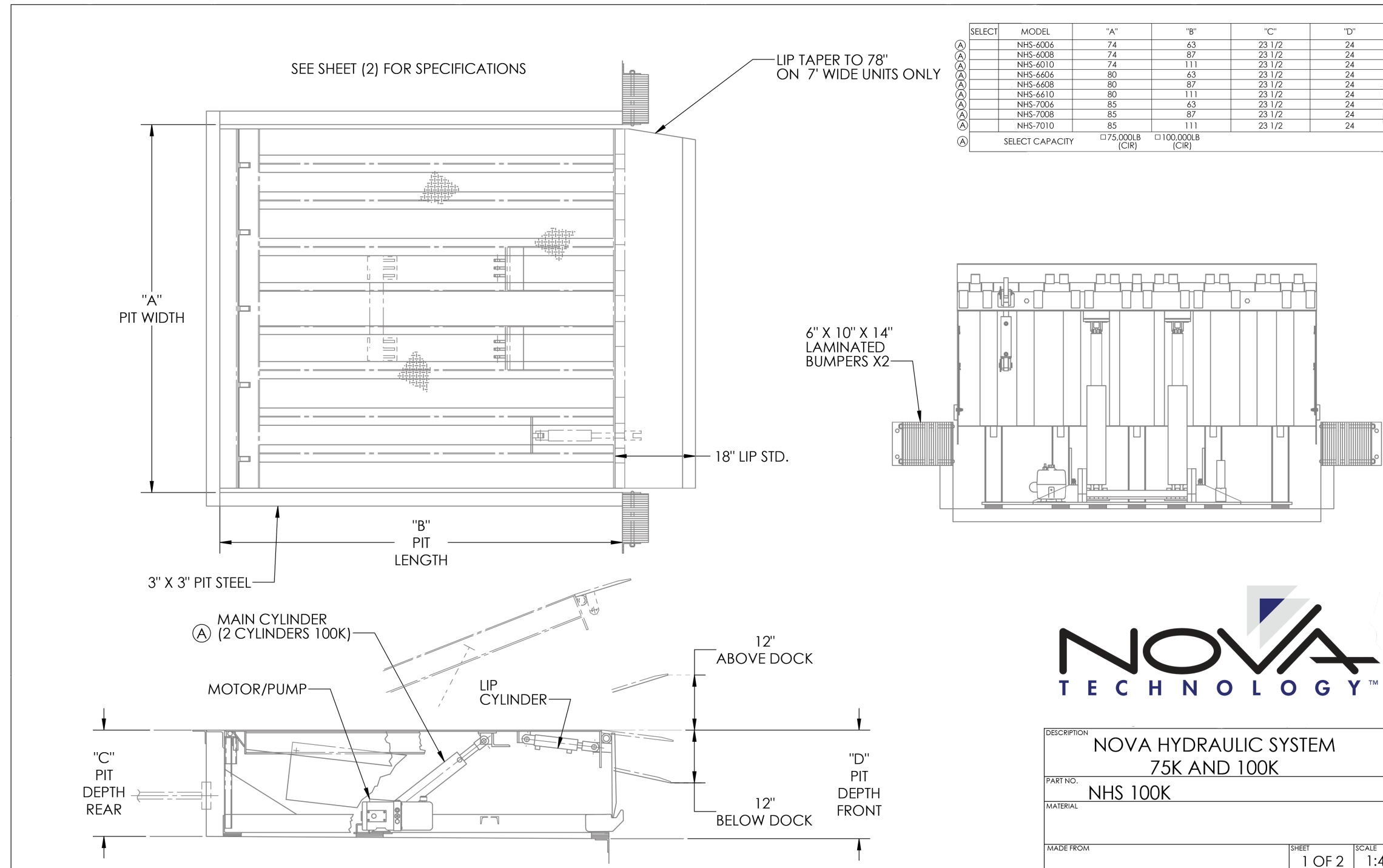


NOVA NHS HYDRAULIC DOCK LEVELER

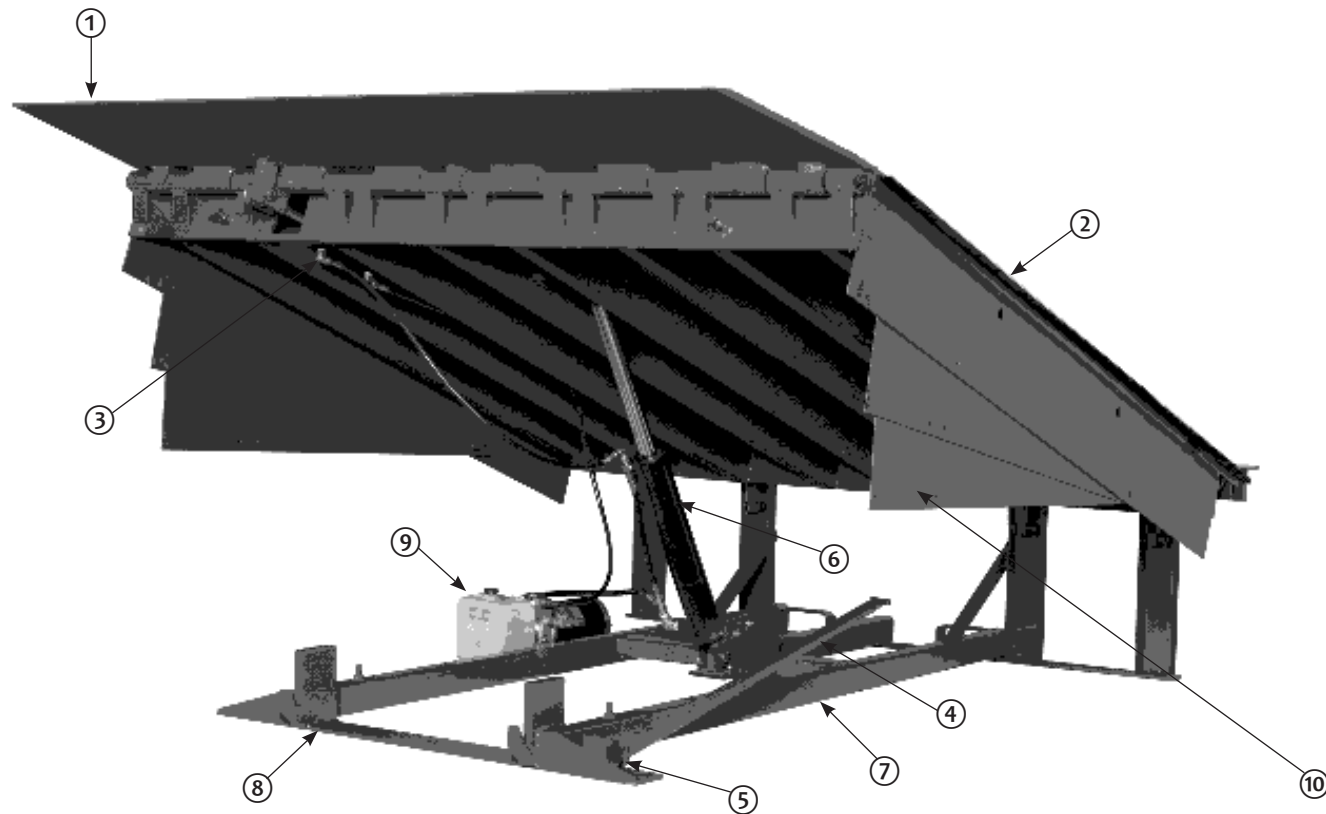
ARCHITECTURAL DRAWING



DESCRIPTION
NOVA HYDRAULIC SYSTEM 75K AND 100K
PART NO.
NHS 100K
MATERIAL
MADE FROM
SHEET
1 OF 2
SCALE
1:4

NOVA NHS HYDRAULIC DOCK LEVELER

(75K-100K)



- | | | |
|----------------------|-----------------------|--------------------------------------|
| 1 — LIP | 5 — PROP PIN AND CLIP | 8 — LIP KEEPERS (2 USED) |
| 2 — PLATFORM | 6 — PLATFORM CYLINDER | 9 — POWERPACK (MOTOR/PUMP/RESERVOIR) |
| 3 — LIP CYLINDER | 7 — MAIN FRAME | 10 — FULL RANGE TOE GUARD (2 USED) |
| 4 — MAINTENANCE PROP | | |

STANDARD FEATURES

- 1 1/4 HP frame-mounted single- or three-phase motor
- Full-range yellow telescoping toe guards
- B610-14 laminated dock bumpers
- Night locks, cross-traffic support
- Integral tamper-proof velocity safety stop
- 18-inch yieldable lip
- 24-inch pit
- Easy clean frame design
- Below dock end load capability
- Positive lip extension and retraction with true regenerative hydraulic control
- NEMA 12 panel
- Structural steel support members

OPTIONAL FEATURES

- Rubber weather seal
- Brush weather seal
- Optional bumper sizes and types available
- 5-inch barrier lip
- 20-inch lip
- Wash down
- 2-inch foam insulation
- Auto-return to dock
- E-stop
- Independent lip
- NEMA 4 (push-button box)
- Spray metalized
- Control box stanchion
- Cut down leveler length and width
- Stainless steel pins and lip rods
- Steel pan: 4-sided
- Quick pit: 3-sided
- IntelliDock Combination control box



WARNING: Cancer and Reproductive Harm-www.P65Warnings.ca.gov