

EZ LOCK

Vehicle Restraint Owner's/User's Manual



TABLE OF CONTENTS

PRECAUTIONS 2

OWNER'S/USER'S RESPONSIBILITIES 6

INSTALLATION INSTRUCTIONS 8

OPERATING PROCEDURES 15

ROUTINE MAINTENANCE 18

TROUBLESHOOTING 20

PARTS 22

WARRANTY..... 29

PRECAUTIONS

Recognize Precautionary Information



Safety-Alert Symbol

The Safety-Alert Symbol is a graphic representation intended to convey a safety message without the use of words. When you see this symbol, be alert to the possibility of death or serious injury. Follow the instructions in the safety message panel.

DANGER

The use of the word DANGER signifies the presence of an extreme hazard or unsafe practice which will most likely result in death or serious injury.

WARNING

The use of the word WARNING signifies the presence of a serious hazard or unsafe practice which could result in death or serious injury.

CAUTION

The use of the word CAUTION signifies possible hazard or unsafe practice which could result in minor or moderate injury.

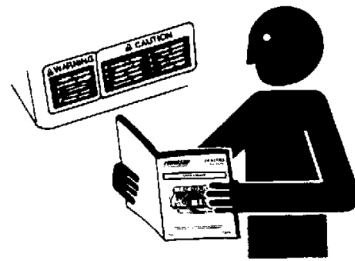
NOTICE

The use of the word NOTICE indicates information considered important, but not hazard-related, to prevent machine or property damage.

SAFETY INSTRUCTIONS

Indicates a type of safety sign, or separate panel on a safety sign, where safety-related instructions or procedures are described.

General Operational Precautions



Read and understand the Owner's/User's Manual and become thoroughly familiar with the equipment and its controls before operating the transport vehicle restraint.

Never operate a transport vehicle restraint while a safety device or guard is removed or disconnected.

Never remove DANGER, WARNING, or CAUTION signs, Placards, or Decals on the equipment unless replacing them.

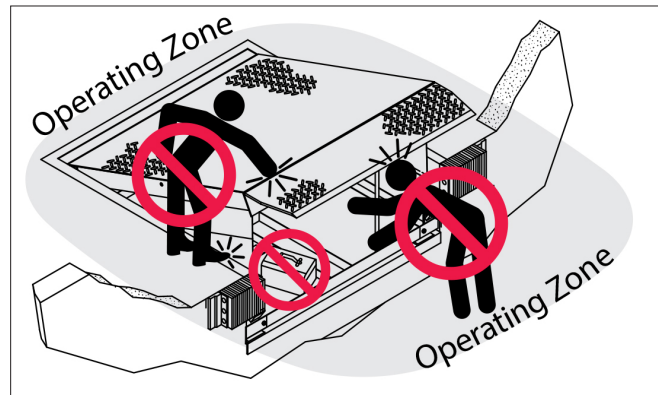



Figure 1

Do not start the equipment until all unauthorized personnel in the area have been warned and have moved outside the operating zone (see Figure 1).


Remove any tools or foreign objects from the operating zone before starting.

Keep the operating zone free of obstacles that could cause a person to trip or fall.

 **WARNING:** This product can expose you to chemicals including lead, which are known to the State of California to cause cancer or birth defects or other reproductive harm. For more information go to www.P65Warnings.ca.gov

PRECAUTIONS

Operational Precautions

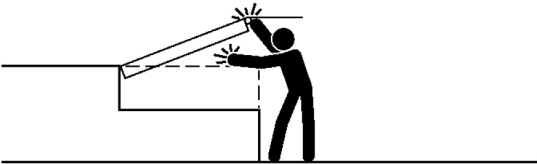
 Learn the safe way to operate this equipment. Read and understand the manufacturer's instructions. If you have any questions, ask your supervisor.

DANGER

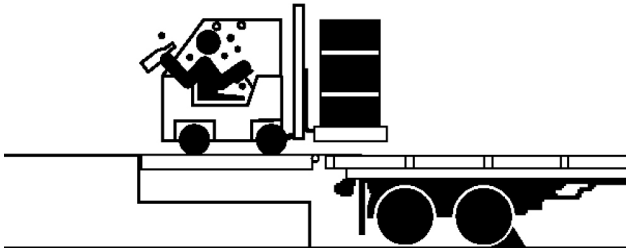


Stay clear of dock leveling device and restraint when transport vehicle is entering or leaving area.

Do not move or use the dock leveling device and restraint if anyone is under in front or near it.



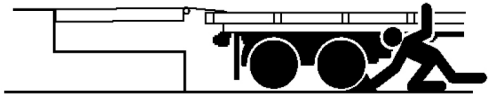
Keep hands and feet clear of pinch points. Avoid putting any part of your body near moving parts.



Do not operate any equipment while under the influence of alcohol or drugs.

If the NOVA EZ-Lock™ vehicle restraint does not operate properly using the procedures in this manual, contact your local representative for service.

WARNING



Chock/restrain all transport vehicles. Never remove the wheel chocks until loading or unloading is finished and transport vehicles driver has been given permission to drive away.

Do not use a broken or damaged restraint device. Make sure proper service and maintenance procedures have been performed before using.

PRECAUTIONS

Maintenance Precautions

VEHICLE RESTRAINT SAFETY DECALS

Every 90 days (quarterly) inspect all safety labels, placards, and tags to ensure they are present, easily seen, and legible. Refer to the Parts section of this publication to identify the location of the safety items listed below. Call NOVA Technical Service for replacements.

| Page # | Item # | Description |
|--------|--------|------------------------------|
| 24 | 38 | No Step Decal |
| 27 | 10 | Placard, Restraint Operation |

WARNING

Always post safety warnings and barricade the work area at dock level and ground level to prevent unauthorized use of the unit before maintenance is complete.

* Refer to OSHA Regulation 1910.146 Confine Spaces, 1910.147 Lockout/Tagout.

PRECAUTIONS

LOADING DOCK SAFETY SIGNS



MF-SS-1003
"A" Frame Loading Dock Safety Sign,
Size: 12-1/2"W X 23-1/2" H w/ English/Spanish Double Sided

OWNER'S/USER'S RESPONSIBILITIES

1. The manufacturer shall provide to the initial purchaser and make the following information readily available to the owners/users and their agents, all necessary information regarding Safety Information, Operation, Installation and Safety Precautions, Recommended Initial and Periodic Inspections Procedures, Planned Maintenance Schedule, Product Specifications, Troubleshooting Guide, Service Parts Listing, Warranty Information, and Manufacturer's Contact Information.
2. The owner/user should recognize the inherent dangers of the interface between the loading dock and the transport vehicle. The owner/user should, therefore, train and instruct all operators in the safe operation and use of the restraining device in accordance with manufacturer's recommendations and industry standards. Effective operator training should also focus on the owner's/user's company policies, operating conditions, and the manufacturer's specific instructions provided with the restraining device. Maintaining, updating, and retraining all operators on safe working habits and operation of the equipment, regardless of previous experience, should be done on a regular basis and should include an understanding and familiarity with all functions of the equipment. Owners/users shall actively maintain, update, and retrain all operators on safe working habits and operations of the equipment.
3. When selecting a restraining device, it is important to consider not only present requirements but also future plans and any possible adverse conditions, environmental factors, or usage. The owners/users shall provide application information to the manufacturer to receive recommendations on appropriate equipment specifications.
4. The owner/user must see all nameplates, placards, decals, instructions, and posted warnings are in place and legible and shall not be obscured from the view of the operator or maintenance personnel for whom such warnings are intended for. Contact manufacturer for any replacements.
5. Modifications or alterations of restraining devices shall be made only with prior written approval from the original manufacturer. These changes shall be in conformance with all applicable provisions of the MH30.3 standard and shall also satisfy all safety recommendations of the original equipment manufacturer of the particular application.
6. An operator training program should consist of, but not necessarily be limited to, the following:
 - a. Select the operator carefully. Consider the physical qualifications, job attitude and aptitude.
 - b. Assure that the operator reads and fully understands the complete manufacturer's owner's/user's manual.
 - c. Emphasize the impact of proper operation upon the operator, other personnel, material being handled, and equipment. Cite all rules and why they are formulated.
 - d. Describe the basic fundamentals of the restraining device and components design as related to safety, e.g., mechanical limitation, stability, functionality, etc.
 - e. Introduce the equipment. Show the control locations and demonstrate functions. Explain how they work when used properly and maintained as well problems when they are used improperly.
 - f. Assure that the operator understands nameplate data, placards and all precautionary information appearing on the restraining device.
 - g. Supervise operator practice of equipment.
 - h. Develop and administer written and practical performance tests. Evaluate progress during and at completion of the course.
 - i. Administer periodic refresher courses. These may be condensed versions of the primary course and include on-the-job operator evaluation.
7. It is recommended that the transport vehicle is positioned as close as practical to the dock leveling device and in contact with both bumpers. When an industrial vehicle is driven on or off a transport vehicle during the loading and unloading operation, the transport vehicle parking brakes shall be applied and wheel chocks or restraining device that provides equal or better protection of wheel chocks shall be engaged. Also, whenever possible, air-ride suspension systems should have the air exhausted prior to performing said loading and unloading operations.

OWNER'S/USER'S RESPONSIBILITIES

8. When goods are transferred between the loading dock and a trailer resting on its support legs/ landing gear instead of a tractor fifth wheel or converter dolly, it is recommended that an adequate stabilizing device or devices shall be utilized at the front of the trailer.
9. In order to be entitled to the benefits of the standard product warranty, the dock safety equipment must have been properly installed, maintained, and operated in accordance with all manufacturer's recommendations and/or specified design parameters and not otherwise have been subject to abuse, misuse, misapplication, acts of nature, overloading, unauthorized repair or modification, application in a corrosive environment, or lack of maintenance. Periodic lubrication, adjustment, and inspection in accordance with all manufacturer's recommendations are the sole responsibility of the owner/user.
10. Manufacturer's recommended maintenance and inspection of all restraining devices shall be performed in conformance with the following practices: A planned Maintenance Schedule Program must be followed, only trained and authorized personnel shall be permitted to maintain, repair, adjust, and inspect restraining devices, and only the use of original equipment manufacturer parts, manuals, maintenance instructions, labels, decals, and placards or their equivalent. Written documentation of maintenance, replacement parts, or damage should be kept. In the event of damage, notification to the manufacturer is required.
11. Restraining devices that are structurally damaged shall be removed from service, inspected by a manufacturer's authorized representative, and repaired or replaced as needed or recommended by the manufacturer before being placed back in service.

INSTALLATION INSTRUCTIONS

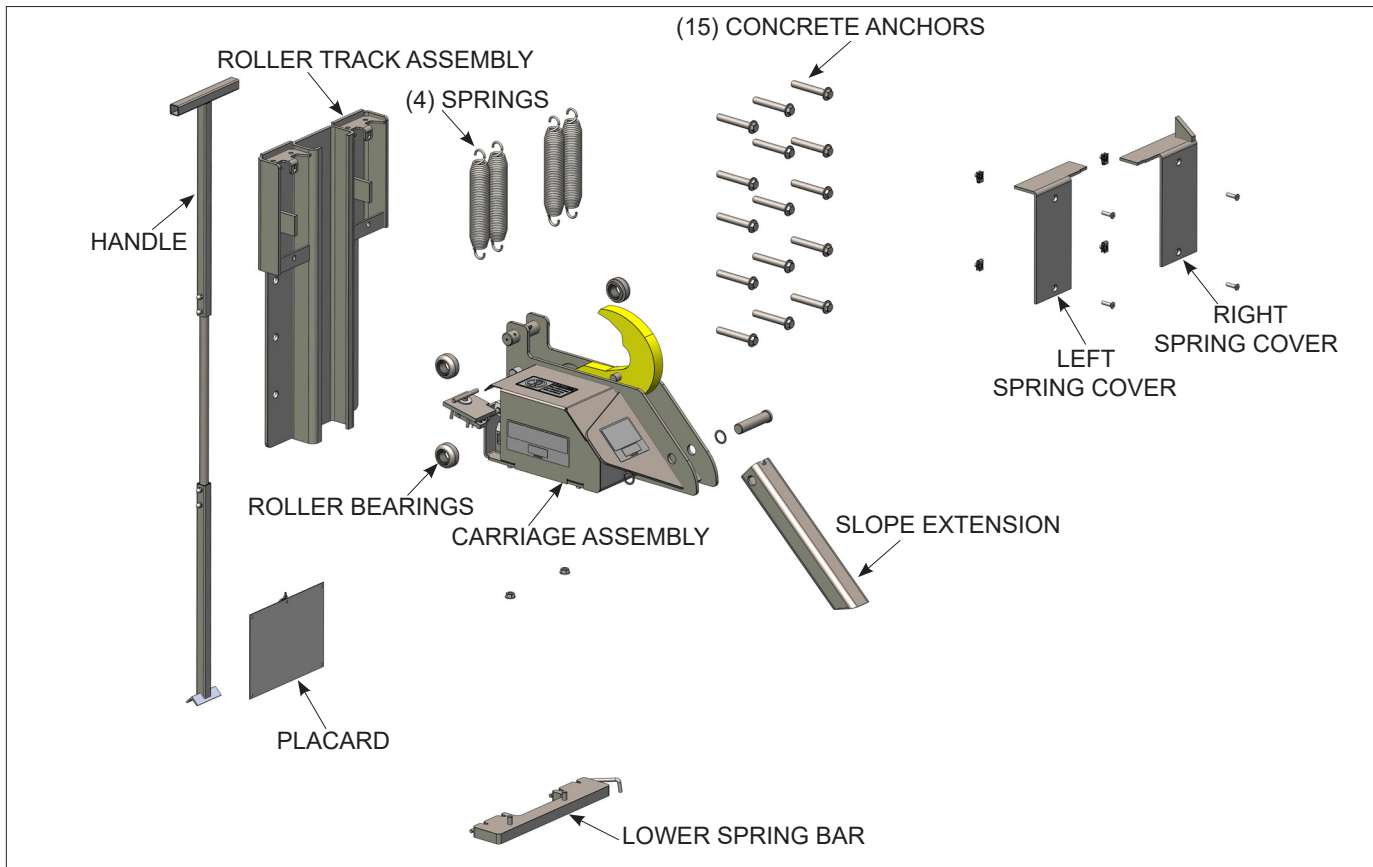


FIGURE A—EZ-LOCK™ COMPONENTS DESCRIPTION

NOTICE

A 4" thick bumper is required regardless of whether or not there is a leveler. DO NOT install a NOVA EZ-Lock™ vehicle restraint on docks without 4" thick bumpers. For thicker bumpers consult factory.

DANGER

Post safety warnings and barricade work area, at dock level and at ground level, to prevent unauthorized use of the dock position.

INSPECT NOVA EZ LOCK™ PARTS

Open packaging and inspect all parts and materials—see Figure A above. Immediately report any damage or missing materials to factory. Review the component assemblies to determine their correct locations.

INSTALLATION INSTRUCTIONS

A NOVA EZ Lock™ vehicle restraint may be installed on docks with or without levelers; consult NOVA for proper application.

Follow the simple installation procedures below:

- Inspect NOVA EZ-Lock™ vehicle restraint parts.
- Install roller track.
- Install NOVA EZ-Lock™ vehicle restraint into roller track.
- Install safety & instruction signs.
- Test operation.

INSTALLATION INSTRUCTIONS

INSTALL ROLLER TRACK

Install roller track onto dock face at specified location by welding to an embedded steel plate or by using the fifteen (15) concrete anchors provided in conjunction with welding to pit steel and a leveler frame. Refer to Figures B and C.

If you have questions, contact NOVA Technical Support at (800) 236-7325.

WARNING

Walls must be poured concrete 8" thick minimum to install wedge anchors. Block or brick wall is not acceptable.

NOTICE

The roller track must be plumb with dock face. If not, use and weld (6) shims 2" wide x 25 5/8" long. If shims are over 1/2" thick use longer anchors. If shims need to be 1" thick or more, contact NOVA.

If the dock face is not perpendicular, contact NOVA Technical Support at (800) 236-7325.

The carriage roller track cannot be bent or deformed. Straighten or replace if necessary.

Some mechanical dock levelers have an adjusting nut access hole in the leveler front subframe. If the NOVA EZ-Lock™ vehicle restraint roller track interferes with the access hole, contact NOVA Technical Service.

Some levelers are slightly recessed within the pit and thus require a shim to be inserted between the roller track and the leveler front subframe and welded in place.

NOTICE

Fifteen (15) concrete anchors are provided with each NOVA EZ-Lock™ vehicle restraint. An anchor must be installed in each roller track hole except for those plug-welded to embedded steel.

ANCHOR INSTALLATION INSTRUCTIONS

1. Put roller track in place.
2. Drill hole of 5/8" diameter and minimum of 4-5/8" deep. Clean out hole.
3. Insert anchor and drive flush with roller track, making sure that the threaded wedge is inserted first. Do not disassemble anchor prior to installation.
4. Install all anchors and torque to 60 ft-lbs. See Figure B.

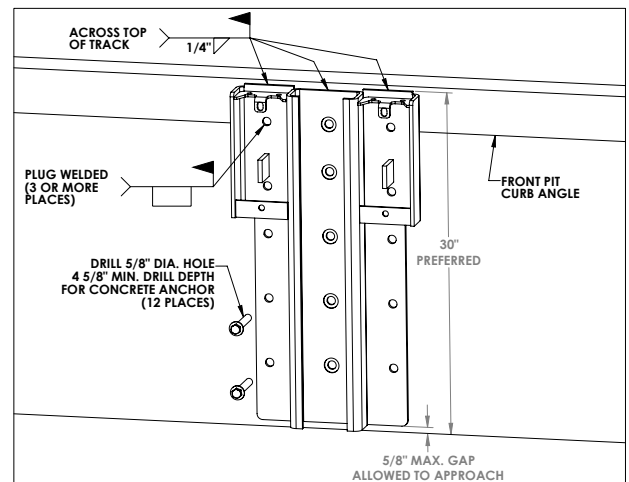


FIGURE B—ANCHORING ROLLER TRACK

INSTALLATION INSTRUCTIONS

NOTICE

Never install the NOVA EZ-Lock™ vehicle restraint directly onto concrete block or brick dock face.

When welding the NOVA EZ-Lock™ vehicle restraint, disconnect power and ground leads to leveler.

Due to actual conditions, total mounting height may be different.

Plug weld all holes that are in contact with the embedded mounting plate. All fifteen (15) holes must be either plug welded or anchored. See Figure B.

Shims must be the full length of the roller track. Minimum electrode must be 1/8" 7018 or better. See Figure D.

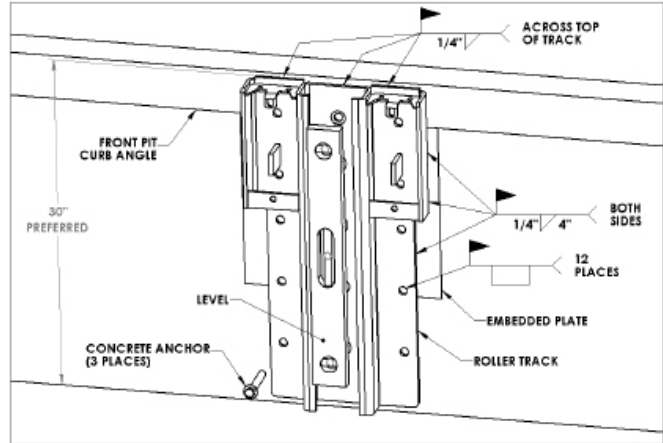


FIGURE C—WELDING ROLLER TRACK FRONT VIEW (WITH EMBEDDED PLATE)

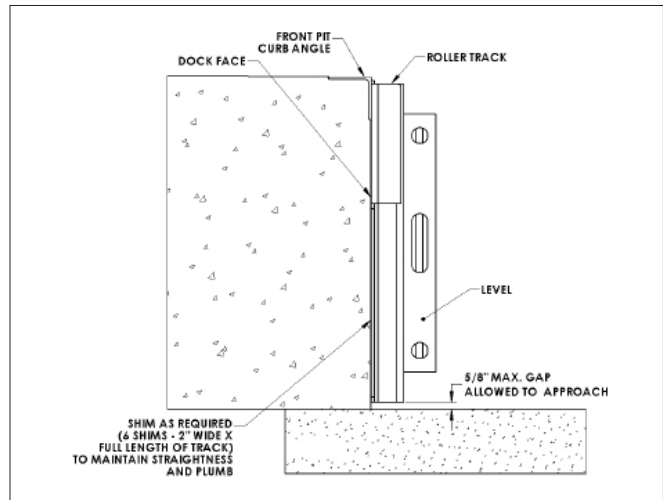


FIGURE D—WELDING ROLLER TRACK SIDE VIEW

INSTALLATION INSTRUCTIONS

INSTALL HANDLE ASSEMBLY

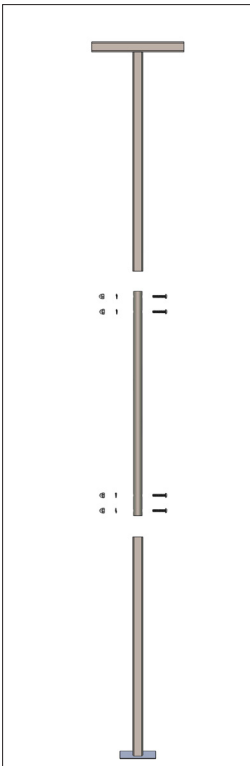
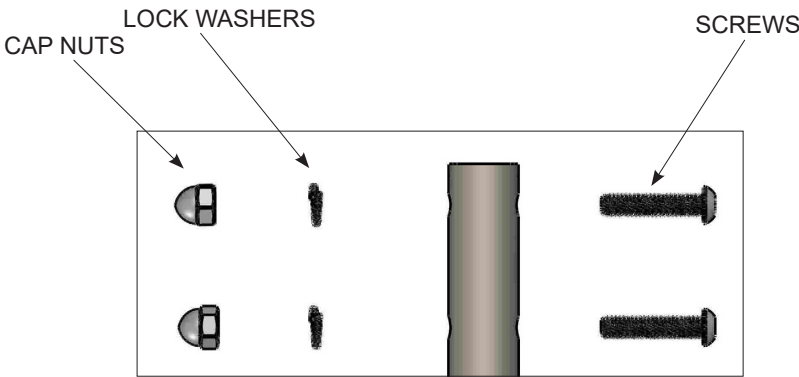


FIGURE E—HANDLE



- HANDLE COMES DISASSEMBLED IN THREE PIECES
- ASSEMBLE HANDLE TOGETHER WITH HARDWARE PROVIDED

INSTALLATION INSTRUCTIONS

INSTALL VEHICLE RESTRAINT



CAUTION

Use lifting device (e.g. crane, jack) when lifting carriage (approx. 110 lbs.). Lifting by hand may cause back injury.



CAUTION

Carriage assembly is shipped with hook in the stored position. It is under high spring tension. Using handle, push down on pad and twist to release hook from stored position and allow it to raise up. Keep clear of hook. See Figure H, Page 16.

(Refer to Figure F, Page13)

- Attach the four (4) springs to the lower spring bar.
- Pull springs upward and slide over top spring mount on the track roller.
- Install (4) bearings on carriage.
- Slide the carriage assembly into the roller track. Refer to Figure F.
- Remove cover.
- Apply anti-seize lubricant to clip nut threads. Install right and left spring cover with clip nuts and flat head screws provided.
- Position and bolt the lower spring bar to the bottom of the NOVA EZ-Lock™ vehicle restraint carriage.
- Reinstall the cover.
- Install slope extension.
- Push down with handle to store hook. See Figure J, Page 17.
- Mount the placard on the inside wall to the left of the dock leveler at eye level.

INSTALLATION INSTRUCTIONS

INSTALL VEHICLE RESTRAINT (continued)

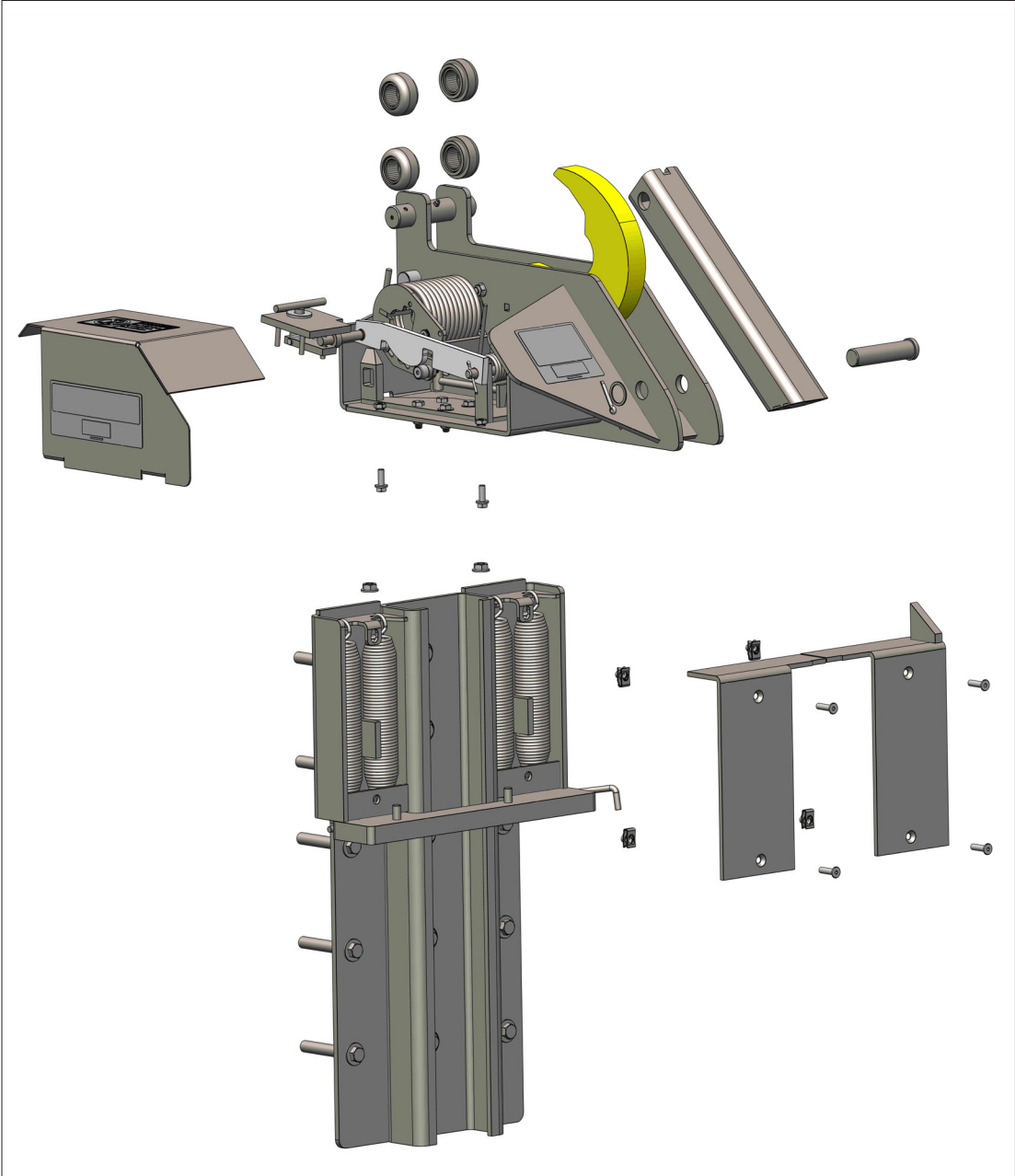


FIGURE F—INSTALL CARRIAGE ASSEMBLY INTO ROLLER TRACK

This page intentionally left blank

OPERATING PROCEDURES

! WARNING

Before loading or unloading a vehicle at your loading dock while using a NOVA EZ-Lock™ vehicle restraint, always visually inspect to be sure that the restraint is engaged with the Rear Impact Guard (RIG). If the restraint is still not engaged after backing the trailer firmly against the dock bumpers, secure the trailer by other means.

Be sure that the area around the RIG assembly is clear of obstructions.

RIG with cover plates should be secured by other means.

Always operate the NOVA EZ-Lock™ vehicle restraint from the top of the dock.

Perform maintenance on restraints in accordance with Maintenance on page 18 of this manual.

NOVA EZ-Lock™ vehicle restraints should be operated only by authorized personnel who have read and understand the Owner's/User's Manual.

If you have questions, Call your local representative or NOVA at (800) 236-7325.

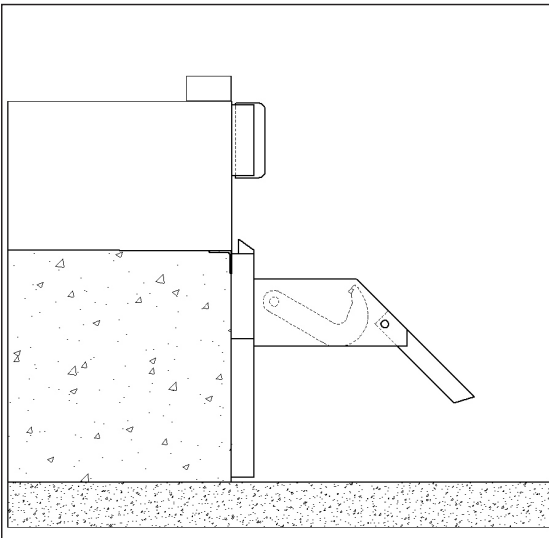


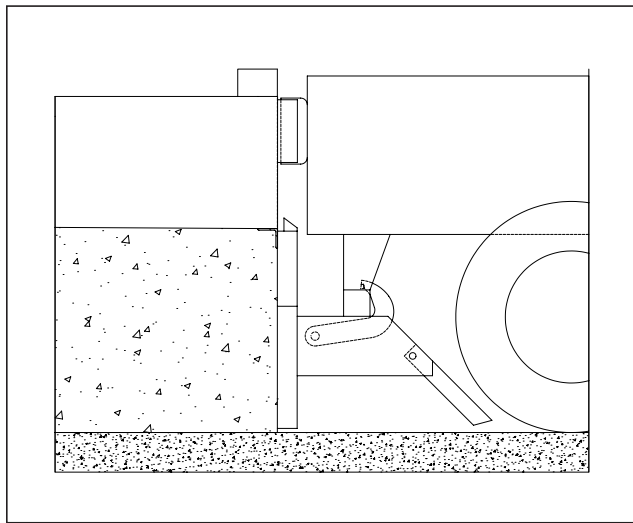
FIGURE G—STORED POSITION

OPERATING PROCEDURES

RESTRAIN

Trailer has backed into loading dock and is parked firmly against dock bumpers. Use handle to push down on rod while twisting to the right to release the hook from the stored position and allow hook to engage RIG.

If manual signal lights are installed, adjust the toggle switch under inside signal lights to display a flashing GREEN light; the outside signal light will then display a flashing RED light.



CAUTION

If trailer can not be restrained due to a lift gate or other obstruction that could become damaged, secure the trailer by other means.

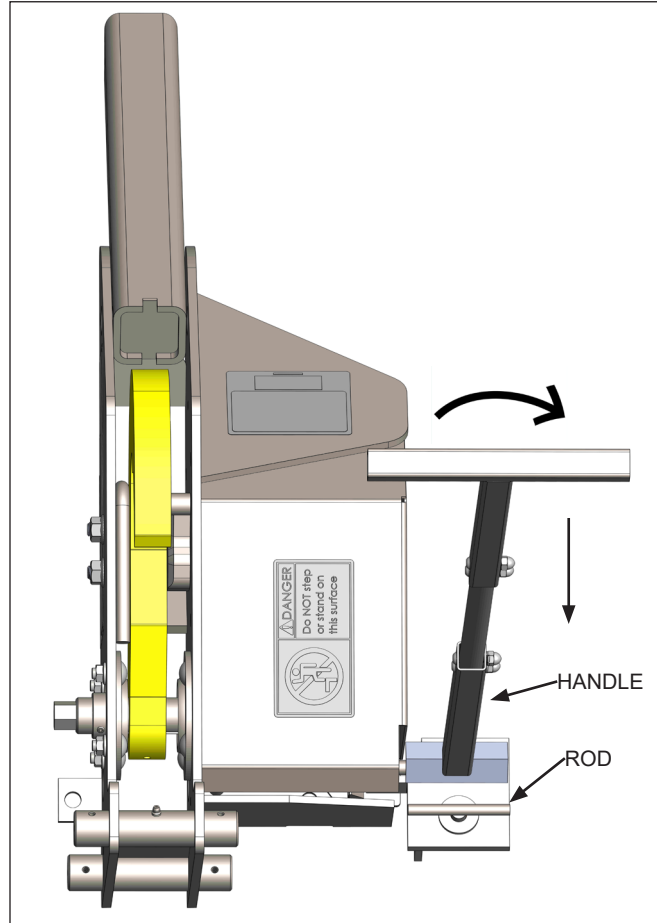


FIGURE H—RESTRAINT LOCKING

WARNING

Visually inspect to ensure that the NOVA EZ-Lock™ vehicle restraint hook securely captures the RIG of the trailer before operating the dock leveler.

OPERATING PROCEDURES

RELEASE

Use handle to push down on pad until hook is stored.
Visually verify hook is in lowered position.

If manual signal lights are installed, adjust the toggle switch under inside signal lights to display a flashing RED light; the outside signal light will then display a flashing GREEN light.

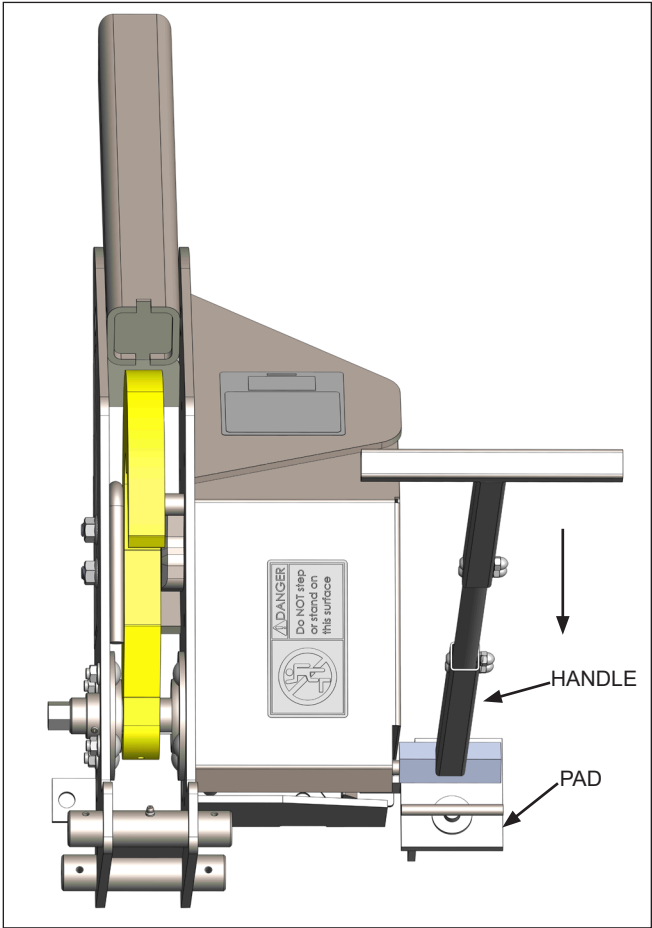
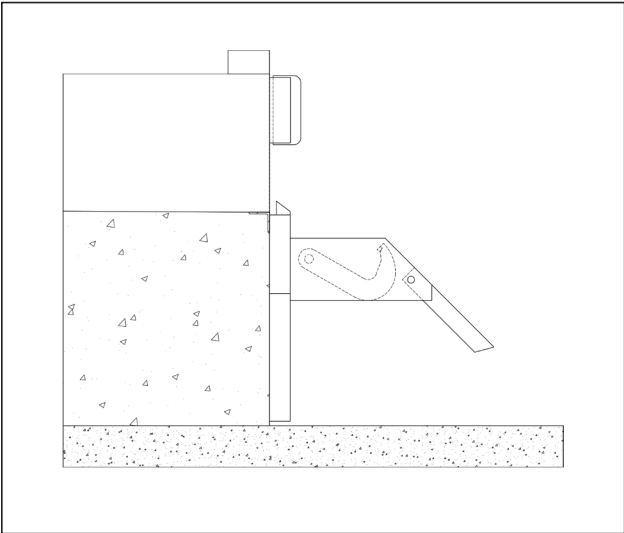
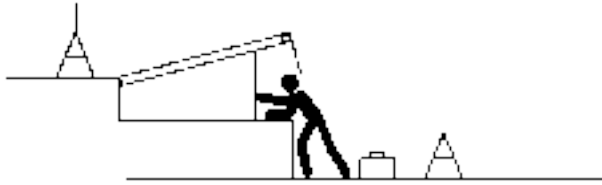


FIGURE J—RESTRAINT UNLOCKING

ROUTINE MAINTENANCE

WARNING



Always post safety warnings and barricade the work area at dock level and ground level to prevent unauthorized use of the unit before maintenance is complete.

CAUTION

Use lifting device (e.g. crane, jack) when lifting carriage (approx. 110 lbs.). Lifting by hand may cause back injury.

NOTICE

Maintenance may be required more frequently at loading docks exposed to harsh environments (extreme climates, corrosive chemicals, frequency of usage, etc.). If these conditions exist, consult NOVA for accelerated maintenance requirements.

DANGER

Unless the dock leveler is equipped with a tethered remote, two people are required to engage the maintenance prop: one person to operate the unit, the other person to engage the maintenance prop.

In addition, it is recommended and good safety practice to use an additional means to support the dock platform and lip anytime when physically working in front of or under the dock leveler. This additional means may include, but is not limited to a boom truck, fork truck, stabilizing bar or equivalent.

CAUTION

Hook spring and Lever spring under constant tension. Stay clear and use caution when performing maintenance or repairs around springs.

(Refer to Figure K, Page 19)

DAILY

- Remove debris around NOVA EZ-Lock™ Vehicle restraint.
- Verify that restraint operates smoothly and hook fully raises when released from stored position.
- Repair, remount, or replace decals on restraint and inside placard as required.
- Inspect dock bumpers. Missing or worn bumpers must be replaced.

90 DAYS

- Perform all Daily maintenance.
- Grease rollers in roller track at fittings located on the top and bottom axle with Mobilith™ SHC 220 No. 2 grease or equivalent.
- Apply thin coat grease to release pin as follows:
 1. Use handle and release hook from stored position.
 2. Unbolt cover and remove.
 3. Grease pin using Mobilith™ SHC 220 No. 2 grease or equivalent.
 4. Reinstall cover.
 5. Use handle and store hook.
- Inspect hook for free play on the hook shaft. Make sure hook is not rubbing against spacer on side of carriage. Tighten hook set screw to 96 in-lbs (8 ft-lbs) if free play is present, make sure hook moves without rubbing against spacer after tightening.
- Check that all concrete anchor bolts are torqued to 60 ft-lbs.
- Perform operational test after all maintenance repairs and adjustments are complete.
- Inspect dock bumpers. A minimum of four inches (4") of projection is required. Worn, torn, loose or missing bumpers must be replaced.

DANGER

It is recommended and good safety practice to use an additional means to support the dock platform and lip anytime when physically working in front of or under the dock leveler. This additional means may include, but is not limited to a boom truck, fork truck, stabilizing bar or equivalent.

* Refer to OSHA Regulation 1910.146 Confine Spaces, 1910.197 Lockout/Tagout.

ROUTINE MAINTENANCE

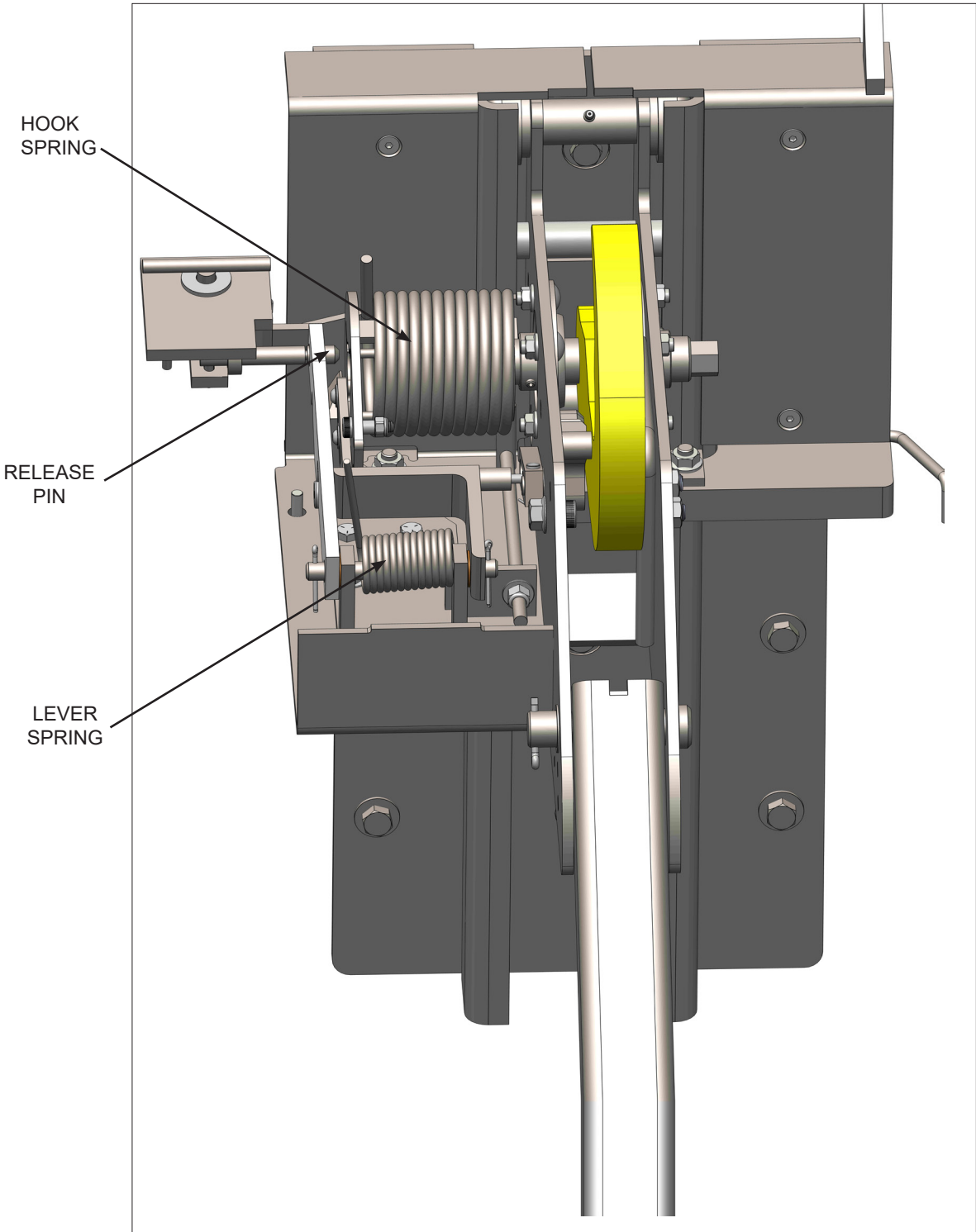


FIGURE K—MAINTENANCE

TROUBLESHOOTING

| PROBLEM | PROBABLE CAUSE | RESOLUTION |
|---|---|---|
| NOVA EZ-Lock™ vehicle restraint carriage does not return to a full up position. | <ul style="list-style-type: none"> • Carriage binding in track. • Damaged roller track. • Broken or weak springs. | <ul style="list-style-type: none"> • Check to see if roller track is clean and rollers are clean, free of debris and lubricated. Use only approved grease to lubricate rollers. • Verify that the roller track is straight and not damaged. • Remove spring cover and replace springs as required. |
| NOVA EZ-Lock™ vehicle restraint hook doesn't rotate upwards from stored position when released. | <ul style="list-style-type: none"> • Broken or weak hook spring. | <ul style="list-style-type: none"> • Remove cover and adjust tension or replace. |
| NOVA EZ-Lock™ vehicle restraint doesn't stay in lowered, stored position. | <ul style="list-style-type: none"> • Broken or worn release pin. • Release pin binding. • Broken or weak latch spring. | <ul style="list-style-type: none"> • Remove cover and replace. • Remove cover and grease. • Replace latch spring located underneath pad. |

This page intentionally left blank

PARTS

CARRIAGE ASSEMBLY DRAWING

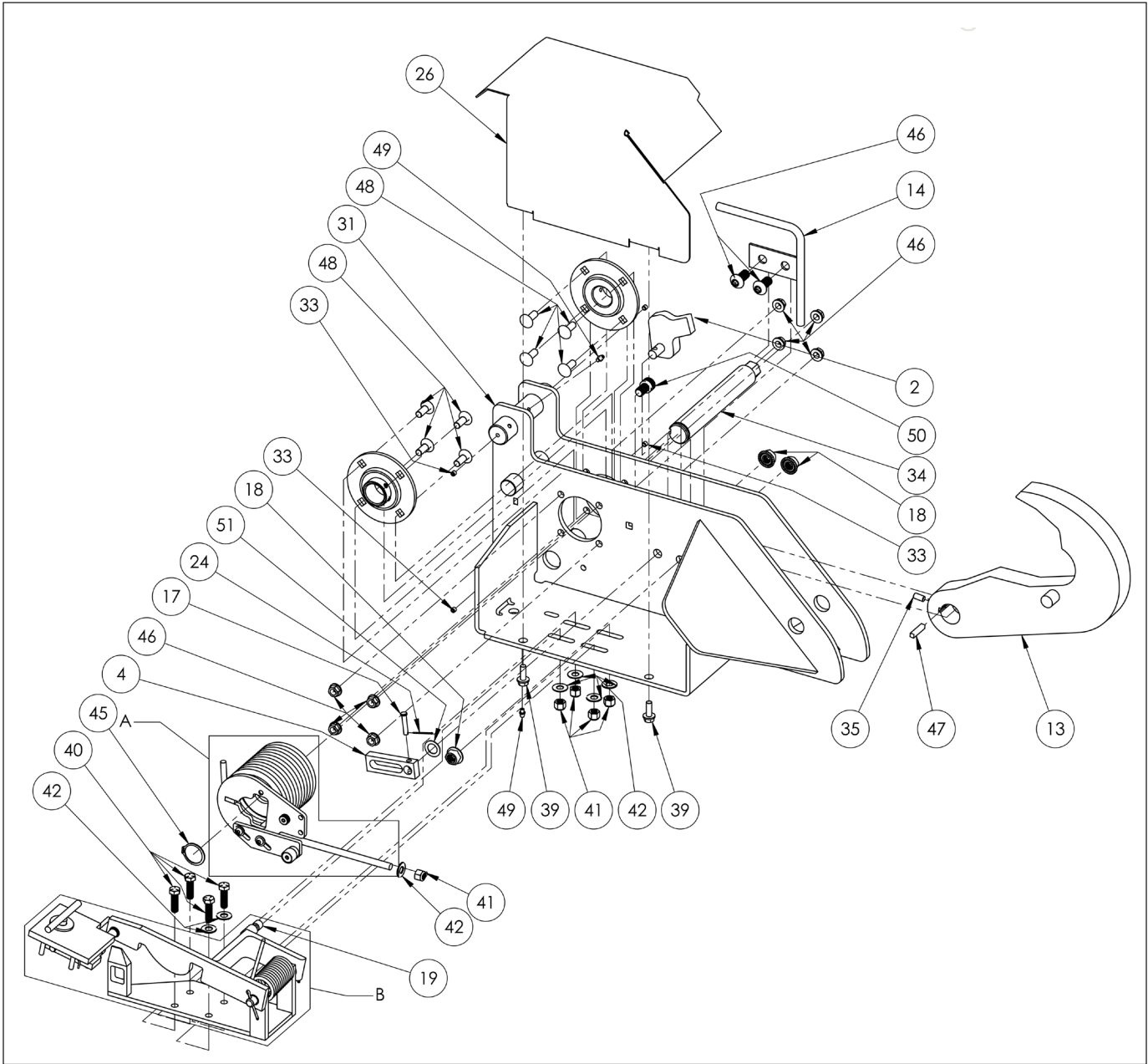


FIGURE L—CARRIAGE ASSEMBLY

PARTS

CARRIAGE ASSEMBLY DRAWING (continued)

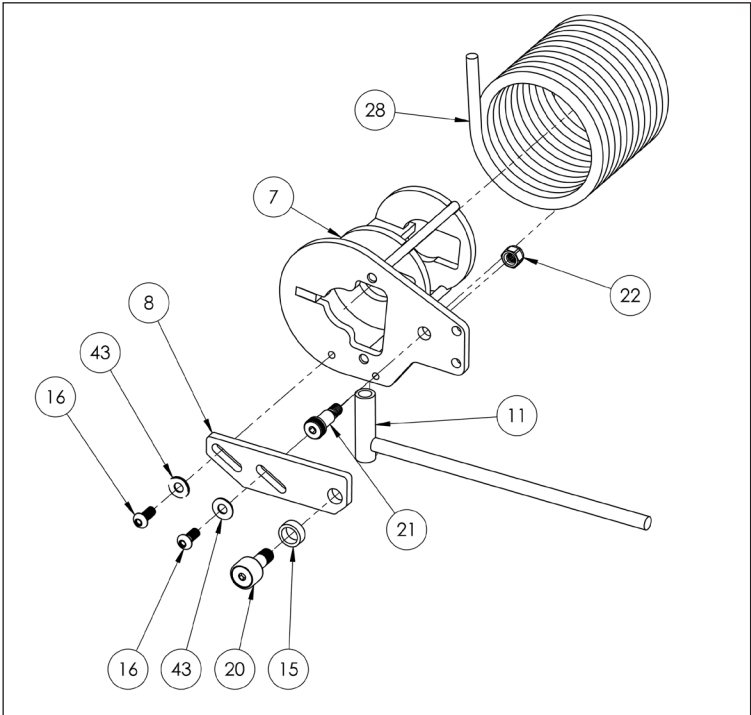
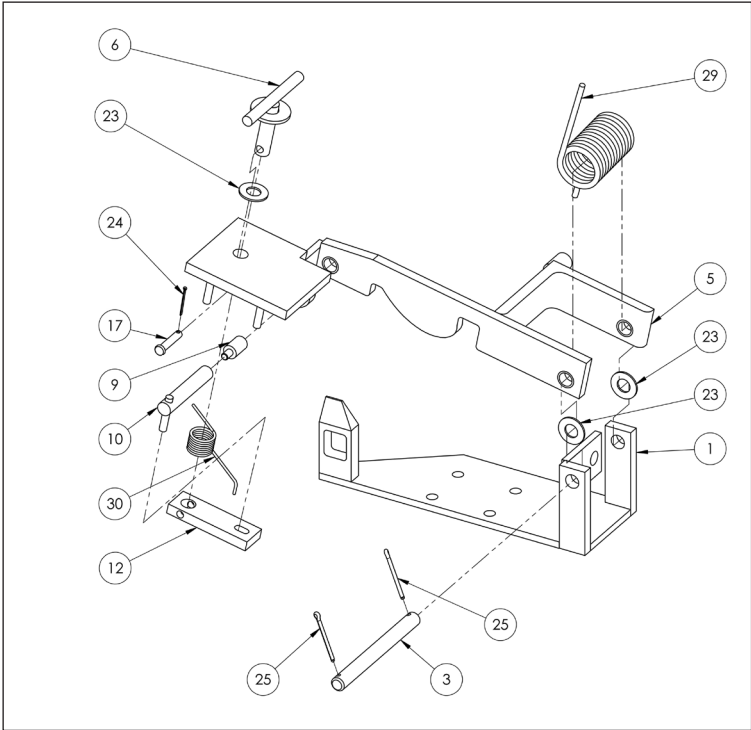


FIGURE M—CARRIAGE ASSEMBLY

PARTS

CARRIAGE ASSEMBLY PARTS LIST (continued)

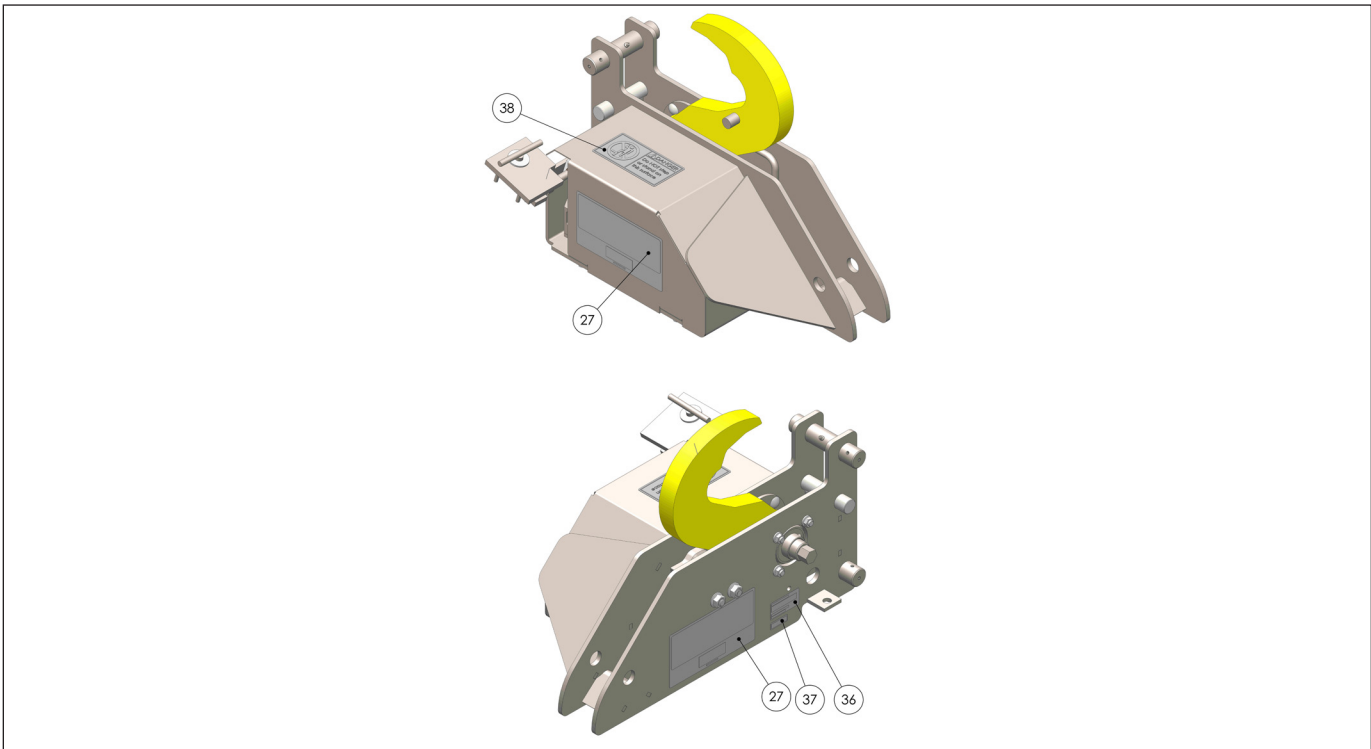


FIGURE N—CARRIAGE ASSEMBLY

CARRIAGE ASSEMBLY PARTS LIST

| ITEM NO. | PART NUMBER | DESCRIPTION | QTY. |
|----------|-------------|-----------------------------------|------|
| 1 | MF5-101-000 | BASE PLATE WELDMENT | 1 |
| 2 | MF5-102-000 | SIDE CATCH WELDMENT | 1 |
| 3 | MF5-104-000 | AXLE | 1 |
| 4 | MF5-105-000 | ROLLER SLOT | 1 |
| 5 | MF5-106-000 | LEVER ARM WELDMENT | 1 |
| 6 | MF5-107-000 | TWIST HANDLE WELDMENT | 1 |
| 7 | MF5-108-000 | SPRING COVER WELDMENT | 1 |
| 8 | MF5-110-000 | ROLLER BRACKET | 1 |
| 9 | MF5-111-000 | PLUNGER END | 1 |
| 10 | MF5-112-000 | PLUNGER WELDMENT | 1 |
| 11 | MF5-113-000 | SPRING ADJUSTMENT | 1 |
| 12 | MF5-114-000 | PLUNGER LINK | 1 |
| 13 | MF5-115-000 | HOOK WITH TAB | 1 |
| 14 | MF5-116-000 | CARRIAGE SPACER | 1 |
| 15 | MF5-117-000 | ROLLER SPACER | 1 |
| 16 | MF5-300-002 | 1/4"-20 x 5/8" LG BHCS | 2 |
| 17 | MF5-300-003 | CLEVIS PIN 1/4"DIA X 1-1/4" LG ZP | 2 |

PARTS**CARRIAGE ASSEMBLY PARTS LIST** *(continued)*

| ITEM NO. | PART NUMBER | DESCRIPTION | QTY. |
|----------|--------------|--|------|
| 18 | MF5-300-005 | 1/2-13 SERRATED FLANGE LOCKNUT ZP | 3 |
| 19 | MF5-300-009 | SMALL CAM FOLLOWER | 1 |
| 20 | MF5-300-010 | CAM FOLLOWER | 1 |
| 21 | MF5-300-011 | 3/8"DIA X 5/8"LG SHOULDER SCREW | 1 |
| 22 | MF5-300-012 | 5/16-18 NYLOCK NUT ZP | 1 |
| 23 | MF5-300-013 | BRONZE WASHER | 3 |
| 24 | MF5-300-014 | COTTER PIN 1/16" DIA X 1"LG ZP | 2 |
| 25 | MF5-300-015 | COTTER PIN 1/8"DIA X 1-1/2"LG | 2 |
| 26 | MF5-500-002 | COVER WELDMENT - MANUAL RESTRAINT | 1 |
| 27 | MF5-500-011 | "EZ-LOCK" HORIZONTAL DECAL | 1 |
| 28 | MF5-600-001 | HOOK SPRING | 1 |
| 29 | MF5-600-002 | LEVER ARM SPRING | 1 |
| 30 | MF5-600-003 | LATCH SPRING | 1 |
| 31 | MF2-004-200 | CARRIAGE WELDMENT | 1 |
| 32 | MF2-017-000 | BEARING ASSEMBLY | 2 |
| 33 | MF2-017-002 | SET SCREW, LOCK & LOAD BEARING | 4 |
| 34 | MF2-020-000 | HOOK SHAFT | 1 |
| 35 | MF2-167-000 | 5/16-18 X 5/8" THRD LCK, SKT SET SCREW | 1 |
| 36 | MF5-500-013 | SERIAL NUMBER DECAL | 1 |
| 37 | MF2-186-000 | PATENT PENDING DECAL | 1 |
| 38 | MF2-199-000 | NO STEP DECAL | 1 |
| 39 | MF4-126-000 | 5/16-18 X 7/8" FLANGE HEAD SCREW | 2 |
| 40 | MF5-300-020 | 3/8-16 X 1-1/4 LG HHCS | 4 |
| 41 | MF5-300-021 | 3/8-16 NYLOCK NUT | 5 |
| 42 | MF5-300-022 | 3/8 FLAT WASHER | 7 |
| 43 | MF5-300-023 | 1/4" FLAT WASHER ZP | 2 |
| 44 | MF5-300-017 | 1/2"-13 X 1" BHCS | 2 |
| 45 | MF2-061-000 | 1 1/4" EXTERNAL RETAINING RING | 1 |
| 46 | MF2-016-000 | 3/8"-16 SERRATED FLANGE LOCK NUT | 8 |
| 47 | MF2-021-000 | 1/4" X 1/4" X 1 1/4" HOOK KEY | 1 |
| 48 | MF2-014-000 | 3/8"-16 X 1" CARRIAGE BOLT | 8 |
| 49 | MF2-013-000 | GREASE FITTING | 2 |
| 50 | IMAR-900-108 | 1/2-13 X 3/4" LG. SHCS, BLACK OXIDE | 1 |
| 51 | DG-060-000 | SHIM WASHER | 2 |

PARTS

ROLLER TRACK ASSEMBLY DRAWING AND PARTS LIST

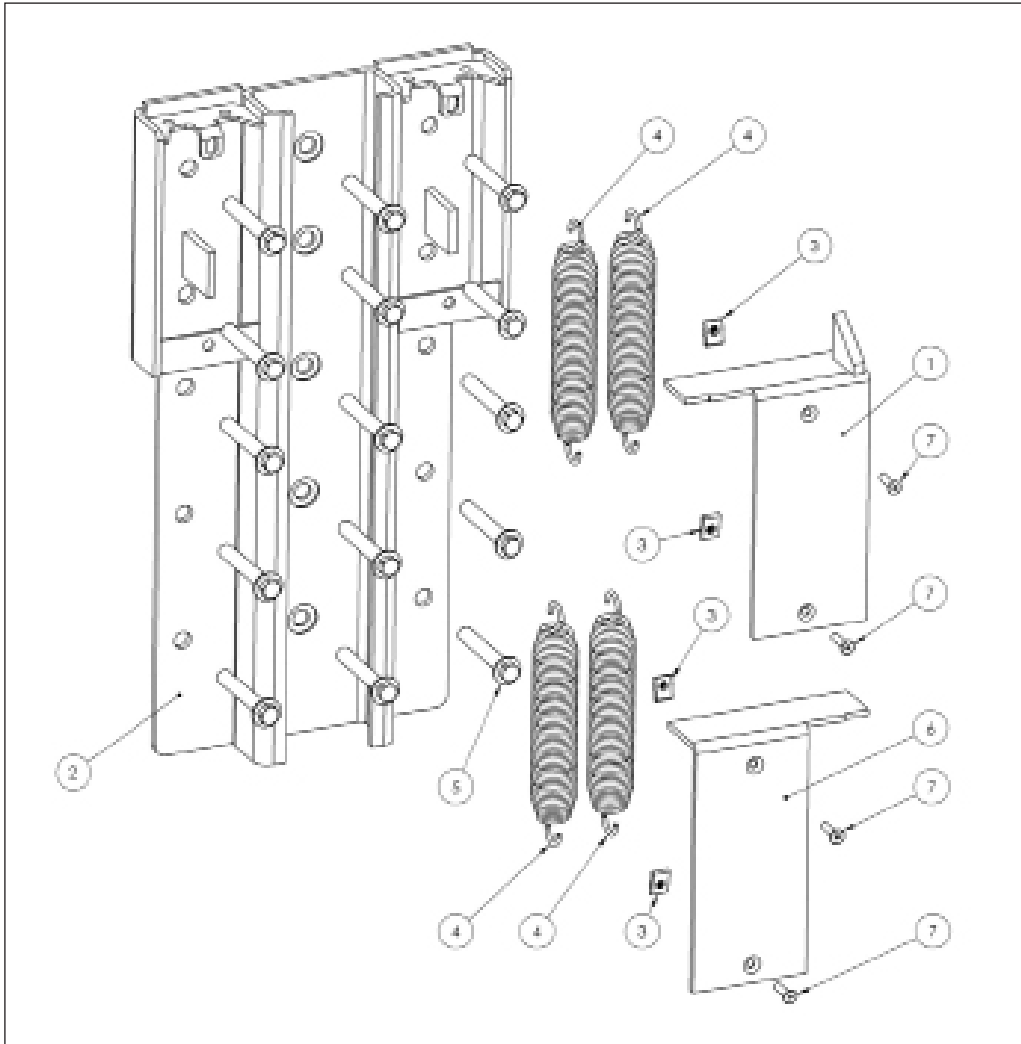


FIGURE P—ROLLER TRACK ASSEMBLY

| ITEM NO. | PART NUMBER | DESCRIPTION | QTY. |
|----------|-------------|--|------|
| 1 | MF2-052-000 | SPRING COVER RIGHT HAND | 1 |
| 2 | MF2-048-000 | ROLLER TRACK | 1 |
| 3 | MF2-214-000 | 5/16-18 CLIP ON BARREL NUT | 4 |
| 4 | MF2-050-000 | EXTENSION SPRING | 4 |
| 5 | MF2-054-000 | 5/8" X 4" CONCRETE ANCHOR | 15 |
| 6 | MF2-051-000 | SPRING COVER LEFT HAND | 1 |
| 7 | MF2-060-000 | 5/16"-18 X 1 1/4" FLAT HEAD SOCKET SCREW | 4 |

PARTS

SLOPE EXTENSION DRAWING AND PARTS LIST

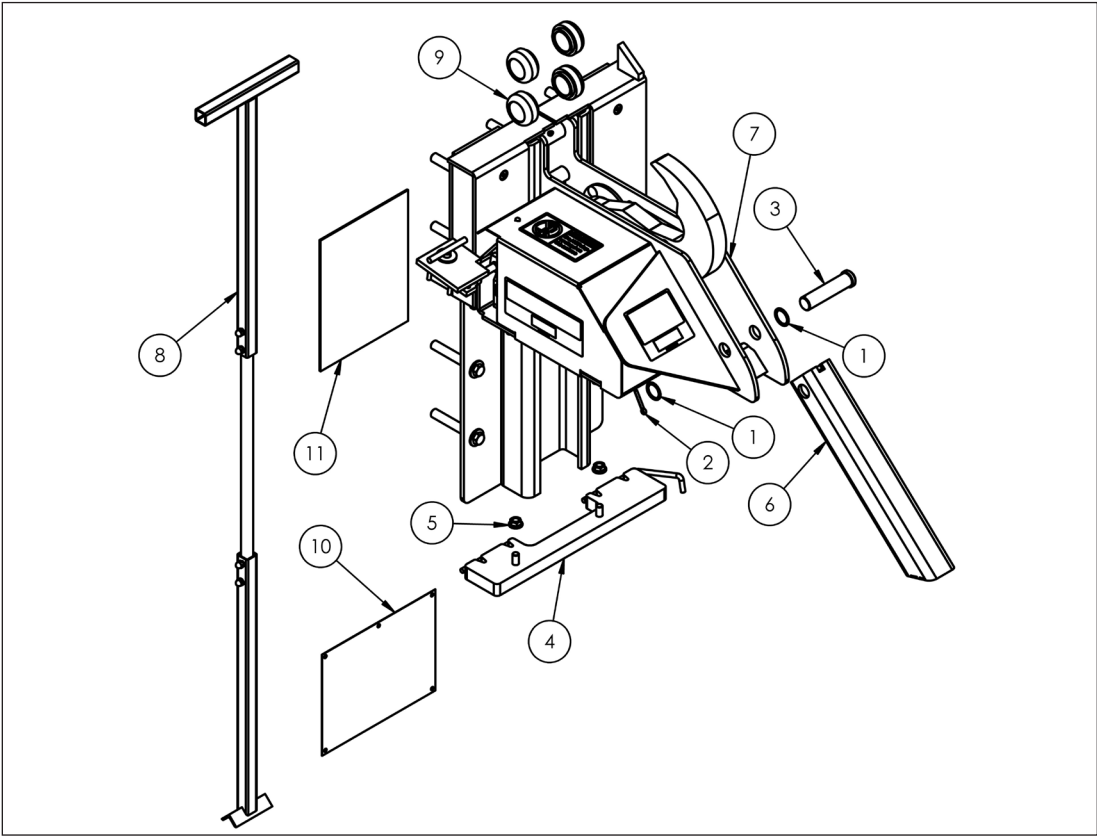


FIGURE R—SLOPE EXTENSION ASSEMBLY

| ITEM NO. | PART NUMBER | DESCRIPTION | QTY. |
|-----------|-------------|---|------|
| 1 | MF2-045-000 | 1" X 18 GAUGE FLAT WASHER | 2 |
| 2 | MF2-046-000 | COTTER PIN | 1 |
| 3 | MF2-044-000 | SLOPE EXTENSION PIVOT PIN | 1 |
| 4 | MF2-043-000 | SPRING MOUNTING PLATE ASSEMBLY | 1 |
| 5 | MF2-026-000 | 7/16-14 SERRATED FLANGE LOCK NUT | 2 |
| 6 | MF2-002-000 | SLOPE EXTENSION OPTIONAL | 1 |
| 7 | MF5-001-000 | EZ-LOCK CARRIAGE ASSEMBLY | 1 |
| 8 | MF5-109-000 | HANDLE ASSEMBLY | 1 |
| 9 | MF2-047-000 | ROLLER ASSEMBLY | 4 |
| 10 | MF5-004 | PLACARD | 1 |
| 11 | MF5-003 | OWNERS MANUAL | 1 |
| NOT SHOWN | MFE0027-Y | MANUAL LIGHT PACKAGE (OPTIONAL) | 1 |
| | MF2-056-000 | OUTSIDE CAUTION SIGN (METAL) (OPTIONAL) | 1 |
| | MF2-057-000 | INSIDE CAUTION SIGN (OPTIONAL) | 1 |

This page intentionally left blank

WARRANTY

NOVA TECHNOLOGY INTERNATIONAL, LLC warrants that its products will be free from defects in design, materials and workmanship for a period of one (1) year from the date of shipment. All claims for breach of this warranty must be made within 30 days after the defect is or can with reasonable care, be detected. In no event shall any claim be made more than 30 days after this warranty has expired. In order to be entitled to the benefits of this warranty, the product must have been properly installed, maintained and operated in accordance with all manufacturer's recommendations and/or specified design parameters and not otherwise have been subject to abuse, misuse, misapplication, acts of nature, overloading, unauthorized repair or modification, application in a corrosive environment or lack of maintenance. Periodic lubrication, adjustment and inspection in accordance with all manufacturers' recommendations are the sole responsibility of the Owner/User.

In the event of a defect, as determined by NOVA TECHNOLOGY INTERNATIONAL, LLC, covered by this warranty, NOVA TECHNOLOGY INTERNATIONAL, LLC shall remedy such defect by repairing or replacing any defective equipment or parts bearing the cost for the parts, labor, and transportation. This shall be exclusive remedy for all claims whether based on contract, negligence or strict liability.

PRODUCT SPECIFIC WARRANTY EZ-Lock™ VEHICLE RESTRAINT

In addition to the "Standard Product Warranty" provided with all Nova Products, NOVA TECHNOLOGY INTERNATIONAL, LLC guarantees materials, components and workmanship to be free of defects for the following extended periods:

- Extended 2-Year General Warranty—for a period of two (2) years from date of shipment, this warranty specifically applies to; the roller track assembly and carriage assembly.
- Extended 5-Year Structural Warranty—for a period of five (5) years from date of shipment, product will carry a prorated structural warranty. This warranty specifically applies to; the roller track, carriage weldment, hook, and lower spring bar only.

NOT COVERED UNDER WARRANTY

- Routine maintenance, lubrication, adjustments, including initial field set-up.
- Repairs required as a result of failure to follow routine maintenance procedures specified in the owner's manual, abuse, accident, willful damage, neglect, improper installation, submersion, or shipping damage.

WARRANTY LIMITATIONS

THE ABOVE WARRANTIES ARE IN LIEU OF ANY OTHER WARRANTIES, WHETHER EXPRESSED OR IMPLIED, INCLUDING BUT NOT LIMITED TO ANY IMPLIED WARRANTY OF MERCHANTABILITY OR FITNESS FOR A PARTICULAR PURPOSE. NOVA TECHNOLOGY INTERNATIONAL, LLC AND ITS SUBSIDIARIES SHALL NOT IN ANY EVENT BE LIABLE TO ANYONE, INCLUDING THIRD PARTIES, FOR INCIDENTAL, CONSEQUENTIAL, OR SPECIAL DAMAGES OF ANY KIND INCLUDING BUT NOT LIMITED TO, BREACH OF WARRANTY, LOSS OF USE, LOSS OF PROFIT, INTERRUPTION OF BUSINESS, OR LOSS OF GOODWILL.



W141N9240 Fountain Blvd Menomonee Falls, WI 53051
Phone 262-502-1591 | 800-236-7325
www.novalocks.com