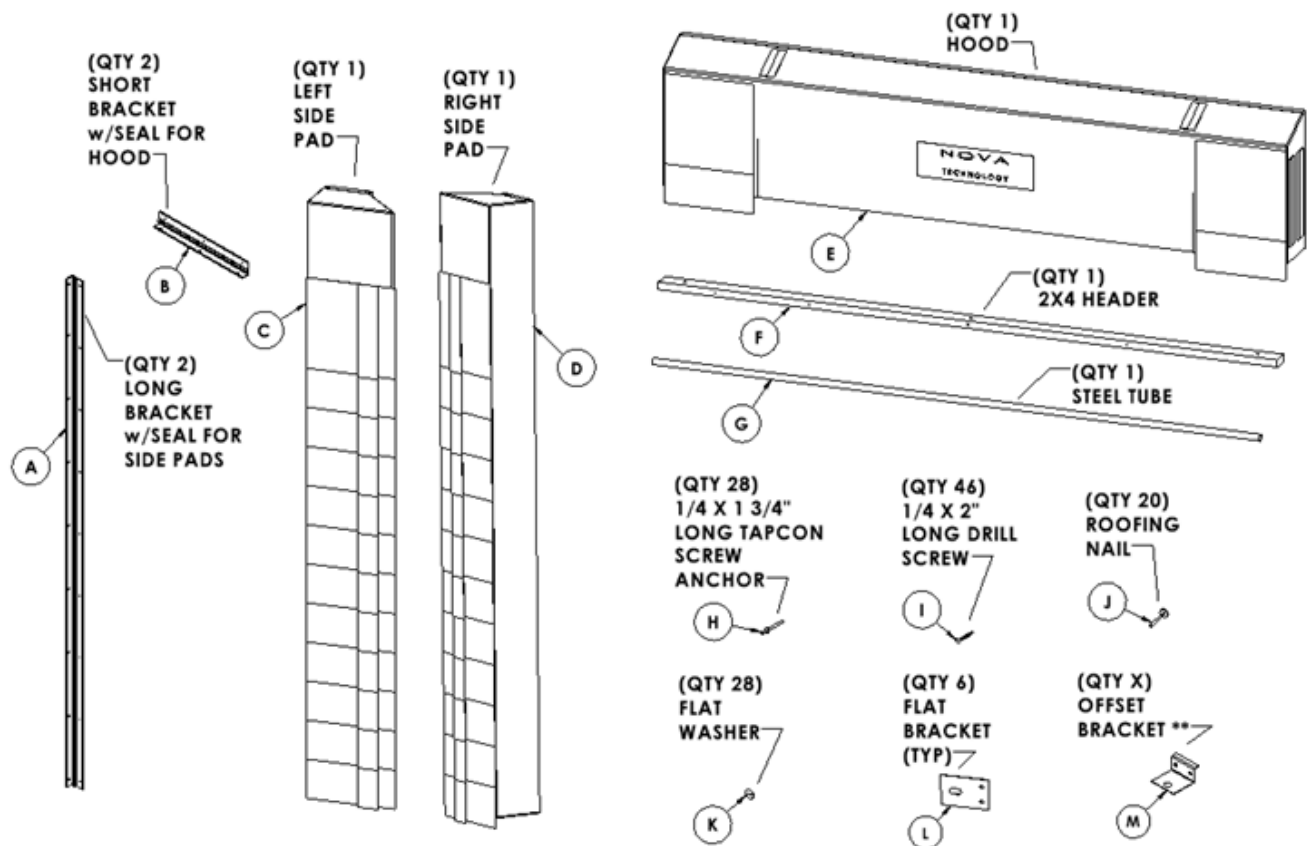


FOREVERSEAL FOAM PAD HOOD (FPH) DOCK SEAL INSTALLATION INSTRUCTIONS



(Right or left — read from outside facing building)

PARTS LIST



ITEM NO.	DESCRIPTION	QTY
A	LONG BRACKET W/SEAL	2
B	SHORT BRACKET W/SEAL	2
C	LEFT SIDE PAD	1
D	RIGHT SIDE PAD	1
E	HOOD	1
F	2 X 4 HEADER	1
G	STEEL TUBE	1
H	1/4 X 1 3/4" LONG TAPCON SCREW ANCHOR	28
I	1/4 X 2" LONG DRILL SCREW	46
J	ROOFING NAIL	20
K	FLAT WASHER	28
L	FLAT BRACKET	6
M	OFFSET BRACKET ** Optional - see note	X

DOORS 8' OR WIDER WILL USE THE FOLLOWING BRACKETS:

- (6) FLAT BRACKETS (L)

DOORS LESS THAN 7'-4" WIDE WILL USE THE FOLLOWING BRACKETS:

- (6) OFFSET BRACKETS (M)

FOR DOOR WIDTHS BETWEEN 7'-4" & 8':

- SEE PACKING SLIP FOR BRACKET TYPE

NOTICE

DO **NOT** OVER TIGHTEN ITEM H & ITEM I.

NOTICE

DO **NOT** USE NAILS ON ANY PLASTIC PARTS;
USE 1/4"x2" DRILL SCREWS

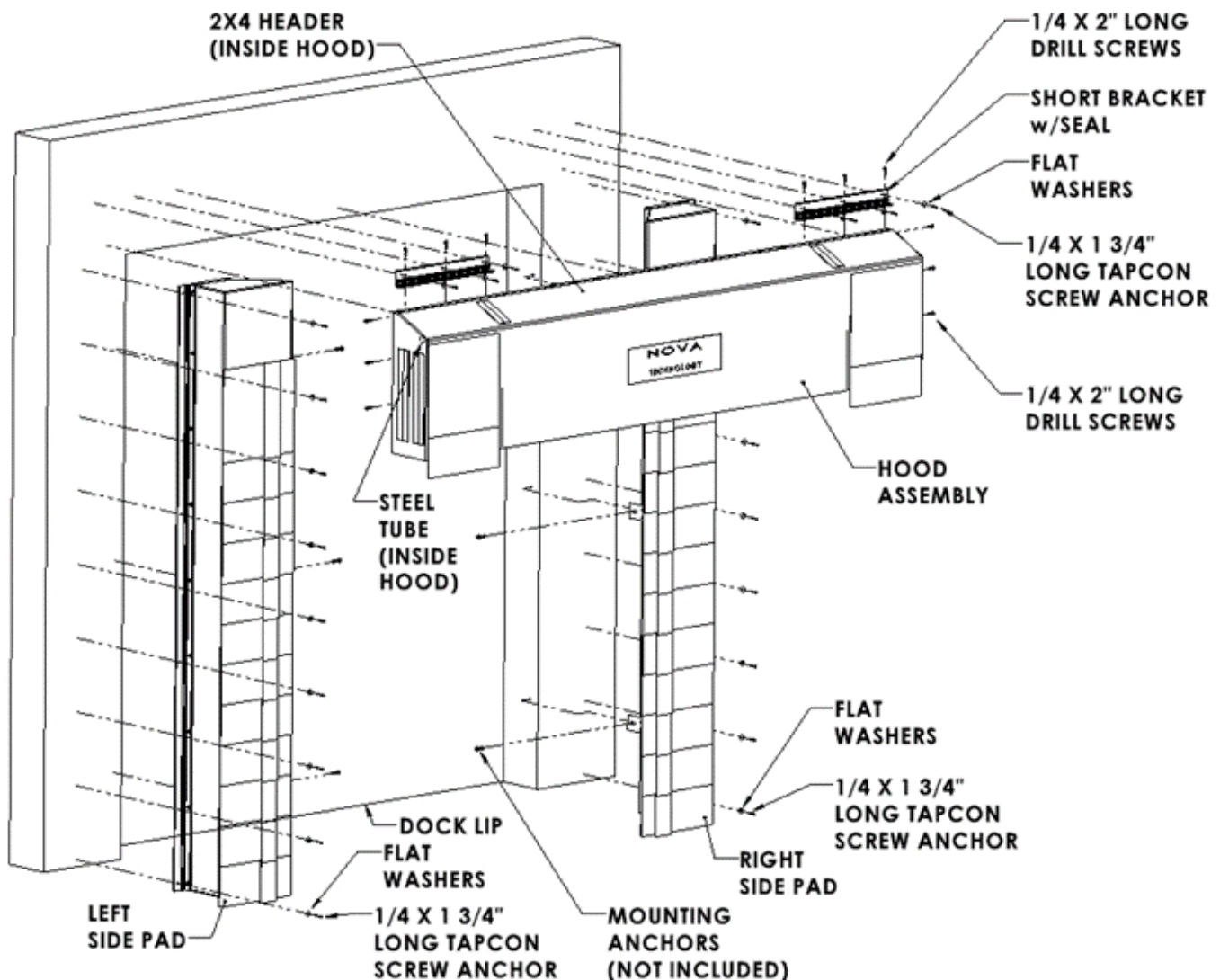
SUGGESTED MOUNTING METHODS TO BUILDING

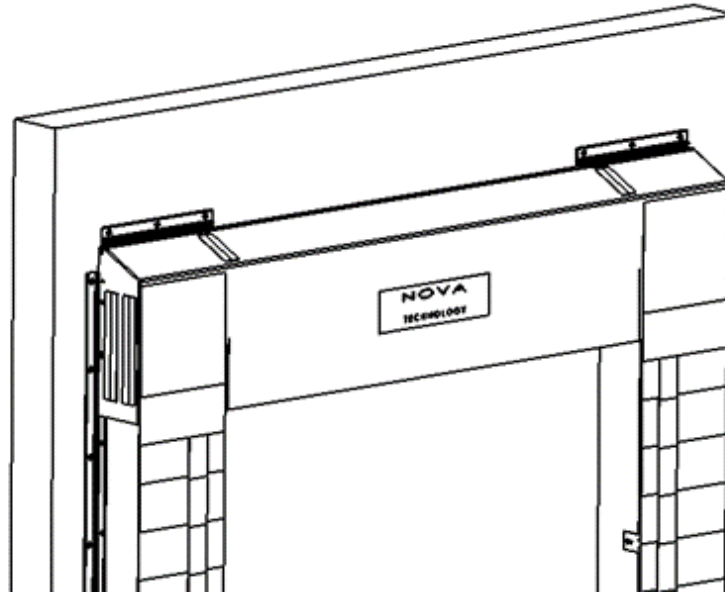
BRICK WALL OR CONCRETE BLOCK OR PRECAST CONCRETE:

1. Use supplied 1/4"x1 3/4" Long Tapcon Screw Anchors on the Long Brackets w/Seal (on outside of Left and Right-Side Pads) and on the Short Brackets w/Seal (upper left and upper right corners of Hood).
2. Use contractor supplied 1/2" or 3/8" diameter x minimum 1 7/8" long anchors to connect the (6) Flat Brackets (or Offset Brackets) to the side opening of the door.
3. Use contractor supplied 1/2" or 3/8" diameter x 3" long anchors to connect the 2x4 wood header frame to the building.
4. Use through bolt fastening (minimum 2 per frame member) if anchors will not hold – 3/8" threaded rod is recommended.

METAL SKIN BUILDING: Through bolt fastening as above. Use a back-up plate (steel or wood) to support bolts, or anchor through existing building girt or purlin when possible.

FOREVERSEAL FOAM PAD HOOD (FPH) DOCK SEAL TYPICAL ARRANGEMENT





1. MARKINGS:

- a. Measure the center of door opening and mark it on the outside of the building (to be used later for attaching the hood assembly to the building).

2. INSPECT THE LONG AND SHORT BRACKETS W/SEALS (A & B) – 2 Long pieces & 2 Short pieces:

- a. A Seal is factory attached to each bracket.
- b. Inspect the (2) Long Brackets w/Seals (A) to confirm that the Seal is held tightly to the bracket along the full length.
- c. If the seal is not held tightly to the bracket at any point along the length, then press the seal tightly at this point ensuring seal and bracket are flush as shown below (Figure 1). Repeat for any area that is not held tightly.
- d. Repeat steps 2b-2c for the (2) Short Brackets w/Seals (B).

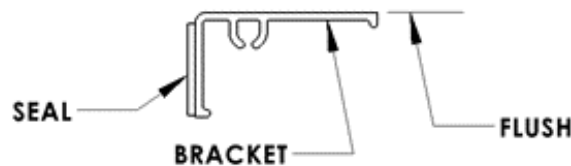


FIGURE 1

3. ATTACH THE LONG BRACKET w/Seal (A) TO RIGHT SIDE PAD (D):

- a. Place the Long Bracket w/Seal (A) next to the Right-Side Pad (D), ensuring that the ends of the bracket are flush with the ends of the Side Pad Backer.
- b. Fastener quantity will vary depending on the length of Side Pad (see below). For 10' Side Pads, use a total of 9 mounting fasteners: 1 near the top, 1 near the bottom, and 7 equally spaced in between.

**(9) FASTENERS TO BE USED ON 10' SIDE PADS.
(10) FASTENERS TO BE USED ON 11'-12' SIDE PADS.
FOR ALL OTHER SIDE PAD LENGTHS, SPACE
FASTENERS UNIFORMLY 14"-16" APART.**

- c. Mark the screw locations on the short side lip of the bracket for the fasteners, as shown (Figure 2 & Figure 3). Fasteners need to be spaced 14"-16" apart. Ensure the new screw locations are not in line with the existing screws on the side of the Right-Side Pad (D).

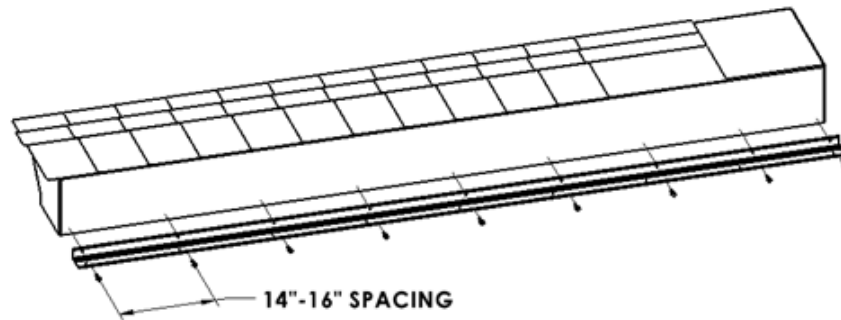


FIGURE 2

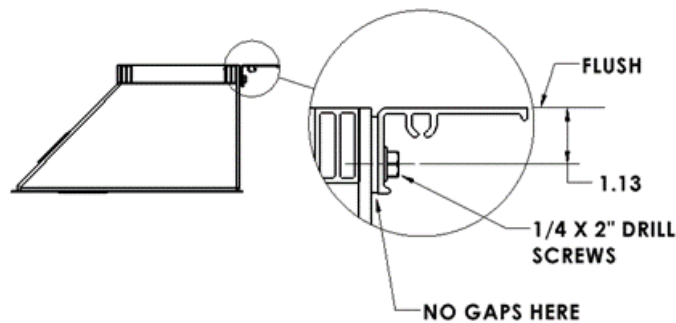


FIGURE 3

- d. Use the markings above to screw the Long Bracket w/Seal (A) to the Right-Side Pad (D) using the supplied 1/4"x2" Long Drill Screws (I). Make sure the back side of the Long Side Bracket w/Seal and back side of the Right-Side Pad are flush, as shown (Figure 3). Also, ensure that there are no gaps between them.

4. ATTACH LONG BRACKET w/Seal (A) TO LEFT SIDE PAD (C):

- Place the Long Bracket w/Seal (A) next to the Left-Side Pad (C), ensuring that the ends of the bracket are flush with the ends of the Side Pad Backer.
- Fastener quantity to be the same as used on the Right-Side Pad.
- Mark the screw locations on the short side lip of the bracket for the fasteners, as shown (Figure 4 & Figure 5). Fasteners need to be spaced 14"-16" apart. Ensure the new screw locations are not in line with the existing screws on the side of the Left-Side Pad (C).

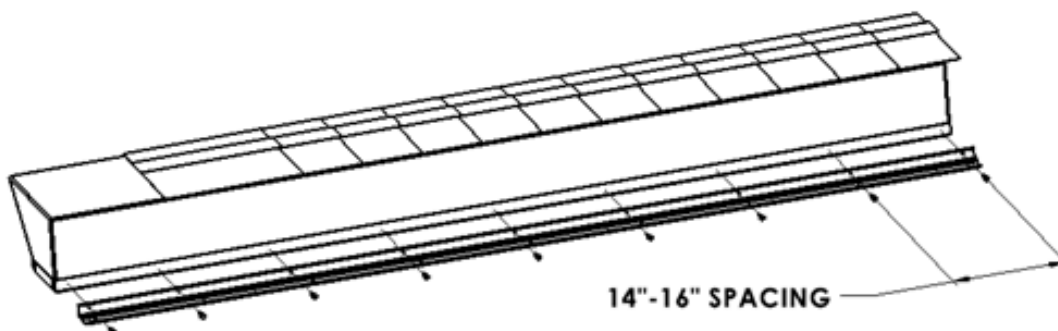


FIGURE 4

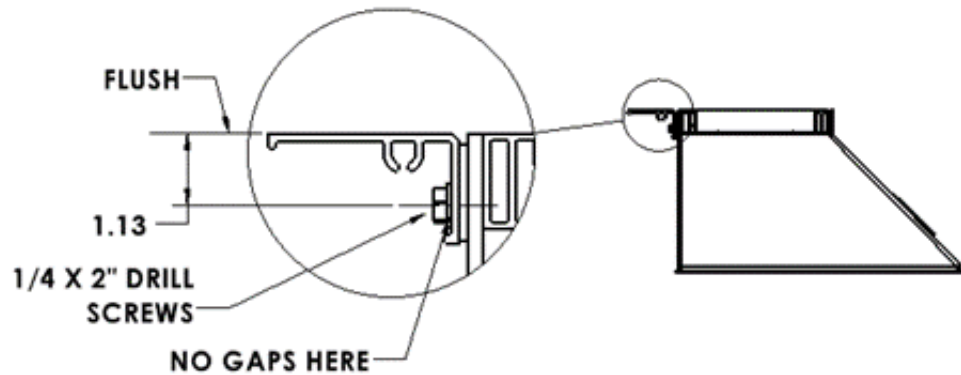


FIGURE 5

- d. Use the markings above to screw the Long Bracket w/Seal (A) to the Left-Side Pad (C) using the supplied 1/4"x2" Long Drill Screws (I). Make sure the back side of the Long Side Bracket w/Seal and back side of the Left-Side Pad are flush, as shown (Figure 5). Also, ensure that there are no gaps between them.

5. **ATTACH BRACKETS (L or M) TO BOTH SIDE PADS (C & D):** Attach (3) Brackets (L or M) to each Side Pad. See the Parts List page to determine which bracket type is used to connect each Side Pad to the side of the door frame opening. Each bracket will be attached with (2) 1/4"x2" Long Drill Screws (I). Mount the edge of the bracket 1 1/2" off the edge of the Side Pad as shown (Figure 6).

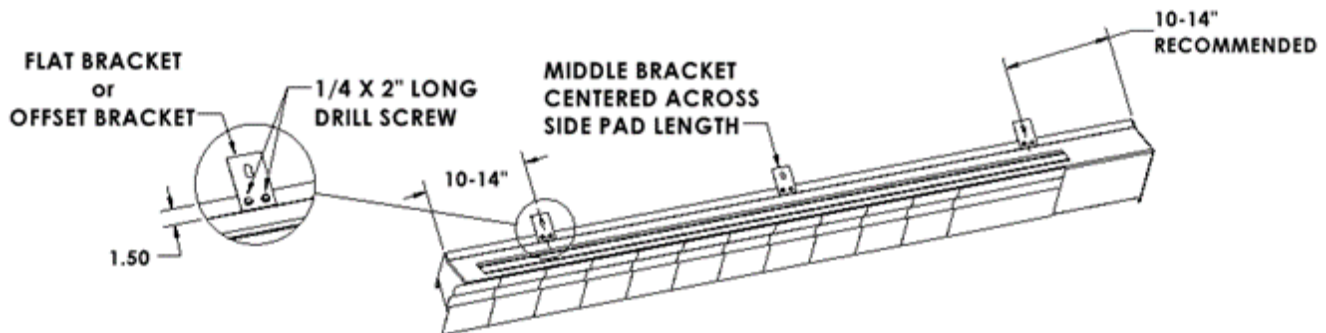


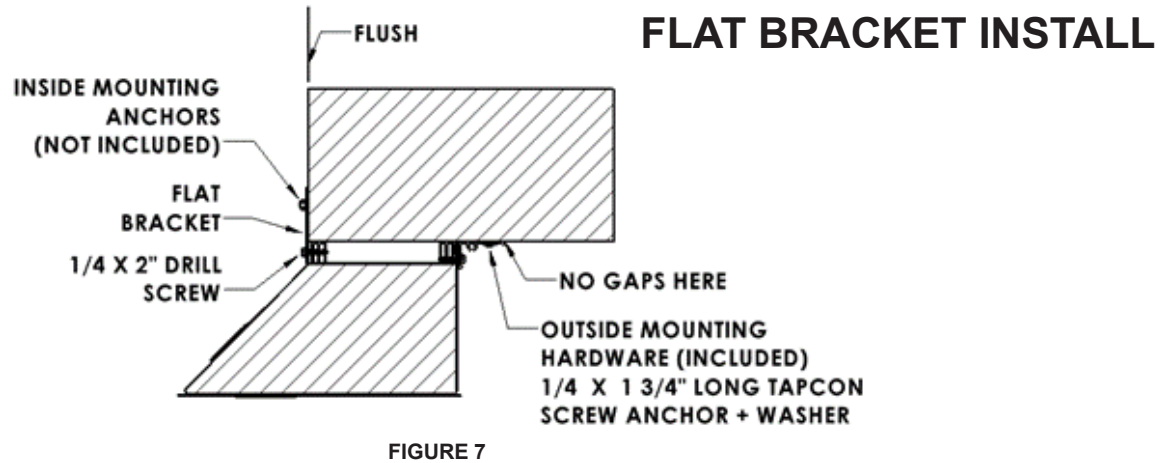
FIGURE 6

NOTICE

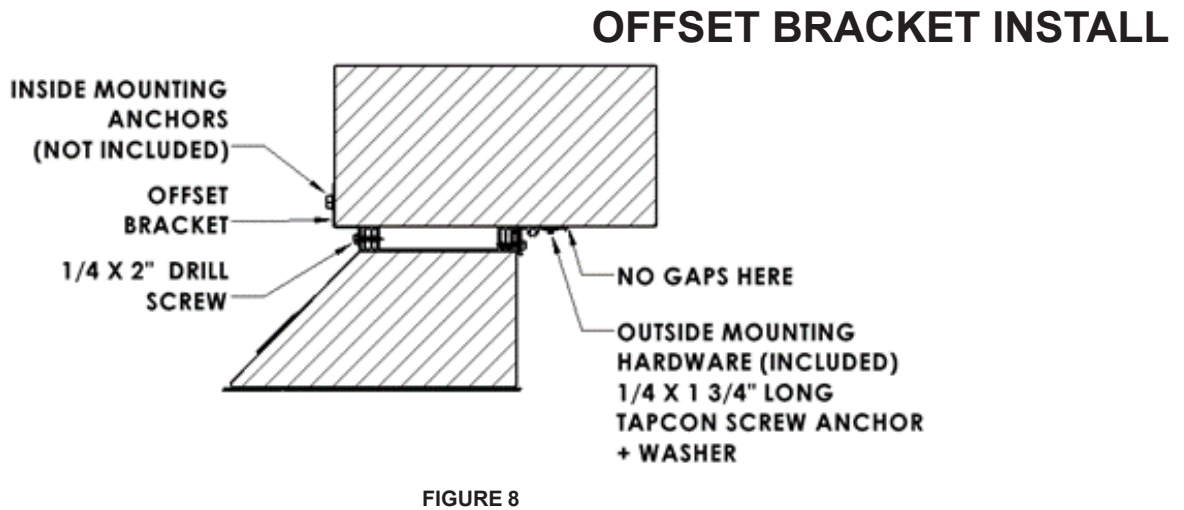
DO NOT USE NAILS ON ANY PLASTIC PARTS; USE 1/4"x 2" DRILL SCREWS.

6. MOUNT RIGHT SIDE PAD (D) TO WALL:

- a. Ensure the building's mounting surface is cleaned of any previous equipment, wall anchors, etc.
- b. Mount the Right-Side Pad (D) on the inside edge of the door jamb ensuring the bottom of the Side Pad Backer is flush with the dock floor (Figure 7 & Figure 8).



OR



- c. Make sure the Right-Side Pad (D) is perfectly plum. Drill the inside mounting holes for the Flat Brackets (L) or Offset Bracket (M) depending on mounting style. Use 1/2" or 3/8" diameter anchors that are at least 1 7/8" long (supplied by the contractor) to connect the Flat Brackets or the Offset Brackets to the side opening of the door on the inside—use 1 fastener per bracket.
- d. The Right-Side Pad (D) will be secured to the building using 1/4"x1 3/4" Long Tapcon Screw Anchors (H) and Flat Washers (K). Fastener quantity will vary depending on the length of Side Pad (see below). For 10' Side Pads, use a total of 9 mounting fasteners: 1 near the top, 1 near the bottom, and 7 spaced in between.

(9) FASTENERS TO BE USED ON 10' SIDE PADS.
(10) FASTENERS TO BE USED ON 11'-12' SIDE PADS.
FOR ALL OTHER SIDE PAD LENGTHS, SPACE FASTENERS UNIFORMLY 14"-16" APART.

- e. The anchors with washers should be spaced 14"-16" apart and ideally placed in mortar joints when possible. Drill the holes into the bracket and wall for the Tapcon Screw Anchors using a 3/16" diameter masonry drill bit. Fasten each anchor with washer as shown (Figure 7, Figure 8 & Figure 9).

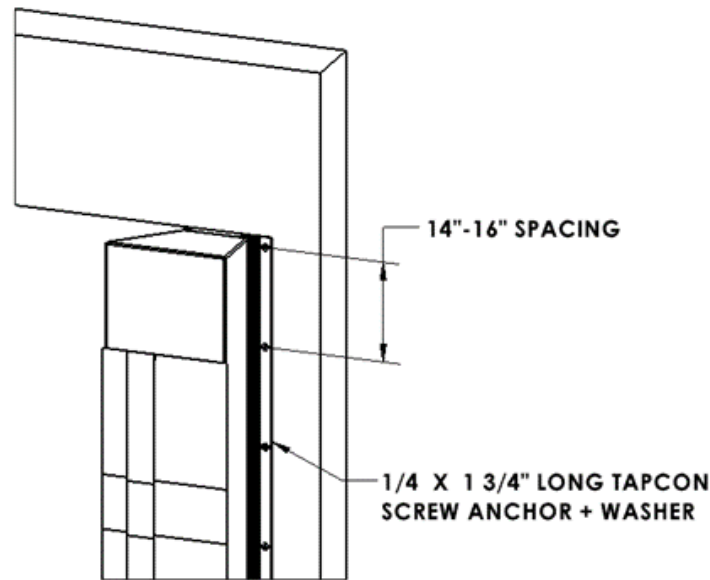


FIGURE 9

- f. Ensure no gaps exist between the side bracket and wall.

7. MOUNT LEFT SIDE PAD (C) TO WALL: Same process as Right-Side Pad mounting.

8. ASSEMBLE HOOD ASSEMBLY:

- a. Position the 2x4 Header (F) on the inside top section of the Hood (E) so the 4" back face of the 2x4 Header is flush with the outside edge of the hood's top lip.
- b. Secure the 2x4 Header (F) to the Hood (E) with a Roofing Nail (J) on the right end of the Hood. Stretch the Hood over to the left end of the 2x4 Header, and then fasten it to the 2x4 Header with a Roofing Nail on the left end (Figure 10).

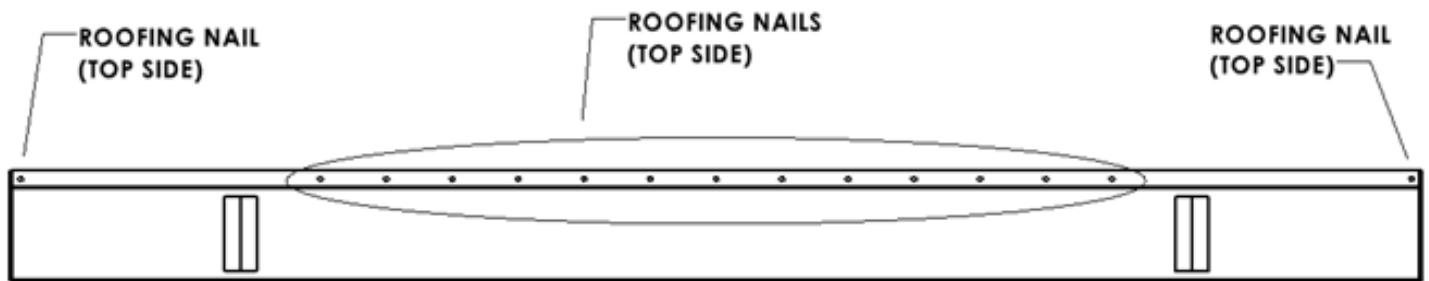


FIGURE 10

- c. Fasten the 2x4 Header (F) to the Hood (E) with Roofing Nails (J) in the center top side of the Hood. Secure the first Roofing Nail 30" inward from the left end of the Hood and then secure the 2nd Roofing Nail 30" inward from the right end of the Hood. Then secure the rest of the Roofing Nails 6" apart in the middle as shown (Figure 10).
- d. Insert the Steel Tube (G) into the Hood Pocket.
- e. Mark the center of the Hood Assembly (used for the next step).

9. MOUNT THE HOOD ASSEMBLY:

- Position the Hood Assembly horizontally by aligning the center mark on the Hood Assembly (Step 8) with the center marking on the building (Step 1). The Hood Assembly will be centered across the door opening. Position the bottom of the 2x4 Header (F) 1/2 inch above the top of the side pads (Figure 11).
- Use (3) anchors provided by the contractor, to attach the Hood Assembly to the building. The mounting anchors will mount through the 2x4 Header (F) into the building; Anchors should be either 1/2" or 3/8" in diameter and 3" long. Position one anchor in the center of the door opening and place the other two anchors near each end (Figure 11).

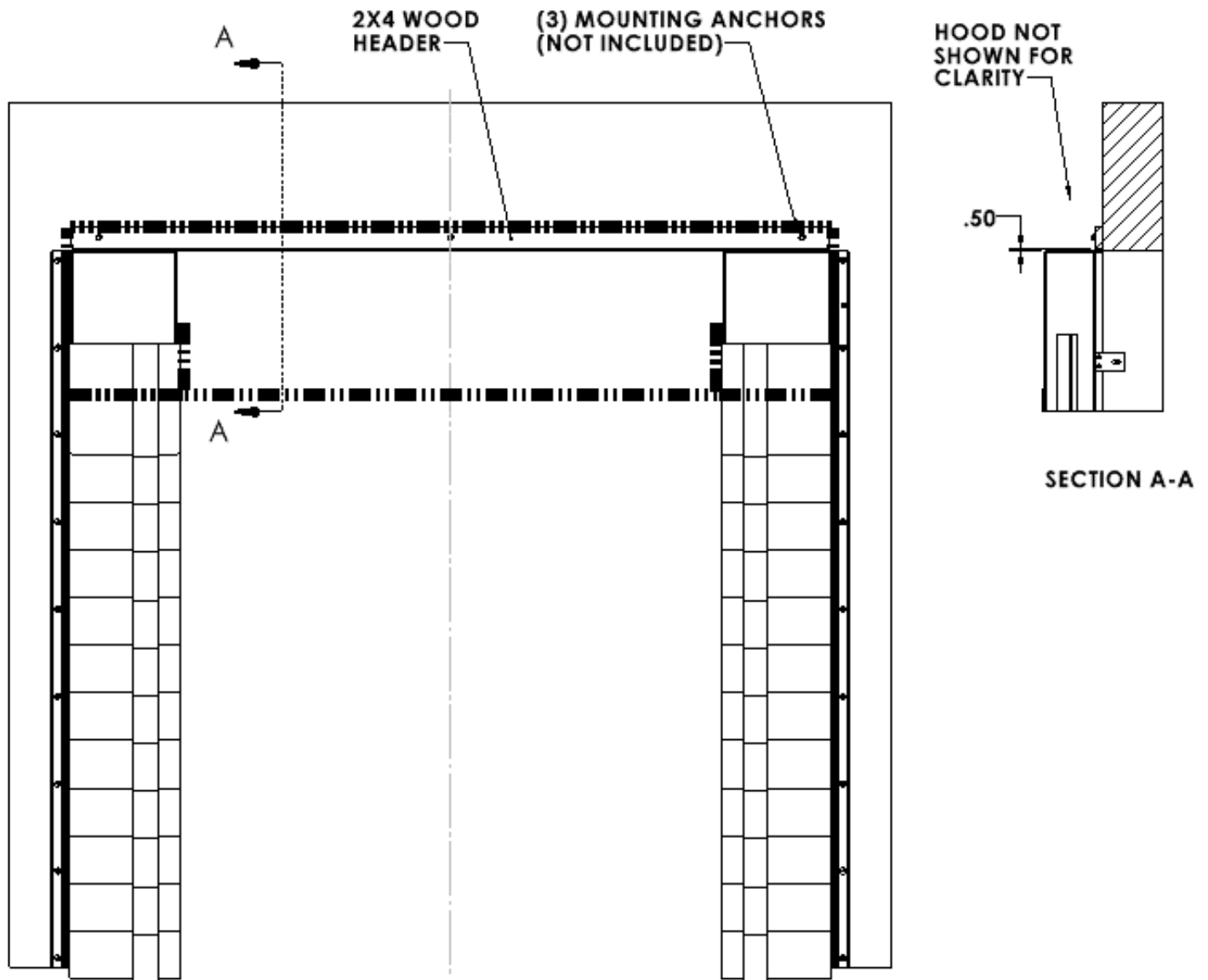


FIGURE 11

- (3) 1/4"x2" Long Drill Screws (I) should be used to fully secure each end of the Hood (E). The bottom 2 drill screws will mount to the Long Bracket w/Seal (A). The top drill screw will mount to the end face of the 2x4 Header (F) (Figure 12).

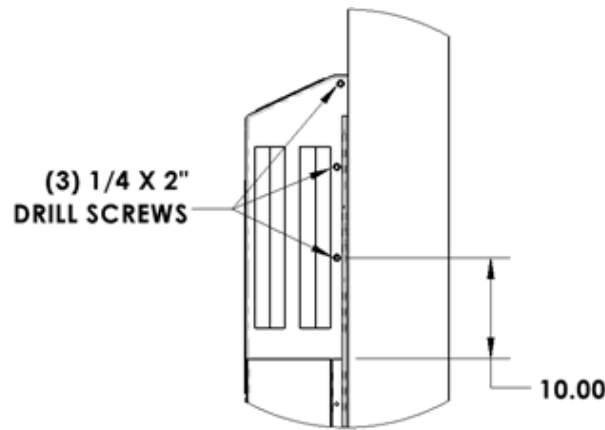


FIGURE 12

NOTICE

DO NOT USE NAILS ON ANY PLASTIC PARTS; USE 1/4"x 2" DRILL SCREWS.

10. ATTACH THE (2) SHORT BRACKETS W/SEALS (B) TO THE TOP ENDS OF THE HOOD (E):

- Position the Short Brackets w/Seal (B) on the top left end of the Hood (E) and flush with the left end face of the 2x4 Header (F).
- The seal side has to lay flat on the top of the Hood (E).
- A total of (6) mounting holes need to be drilled in each Short Bracket w/Seal (B) for 3 fasteners into the building and 3 fasteners into the Hood (E) (Figure 13).
- Mark the (6) drilling locations on the bracket legs and then drill holes for the specified fastener sizes. Ensure the location of the end vertical screw is not in line with the horizontal anchor at the end of the 2x4 Header (F) and also not in line with the Roofing Nail (J) on the top end of the Hood (E).
- Use a 3/16" diameter masonry drill bit when drilling the 3 holes into the bracket for the 1/4"x1 3/4" Long Tapcon Screw Anchors (H).
- Secure the Short Brackets w/Seal (B) using the provided fasteners as shown below (Figure 13).

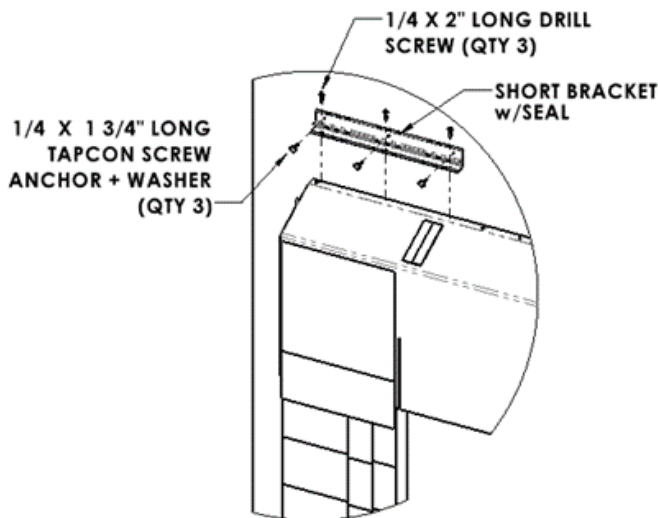


FIGURE 13

NOTICE

DO NOT USE NAILS ON ANY PLASTIC PARTS; USE 1/4"x 2" DRILL SCREWS.

- Repeat the process for the Short Bracket w/Seal (B) on the right side.

- 11. SEAL PERIMETER:** Apply sealant to all outer edges (Figure 14). Vulkem® 116 is our recommended sealant for best results.

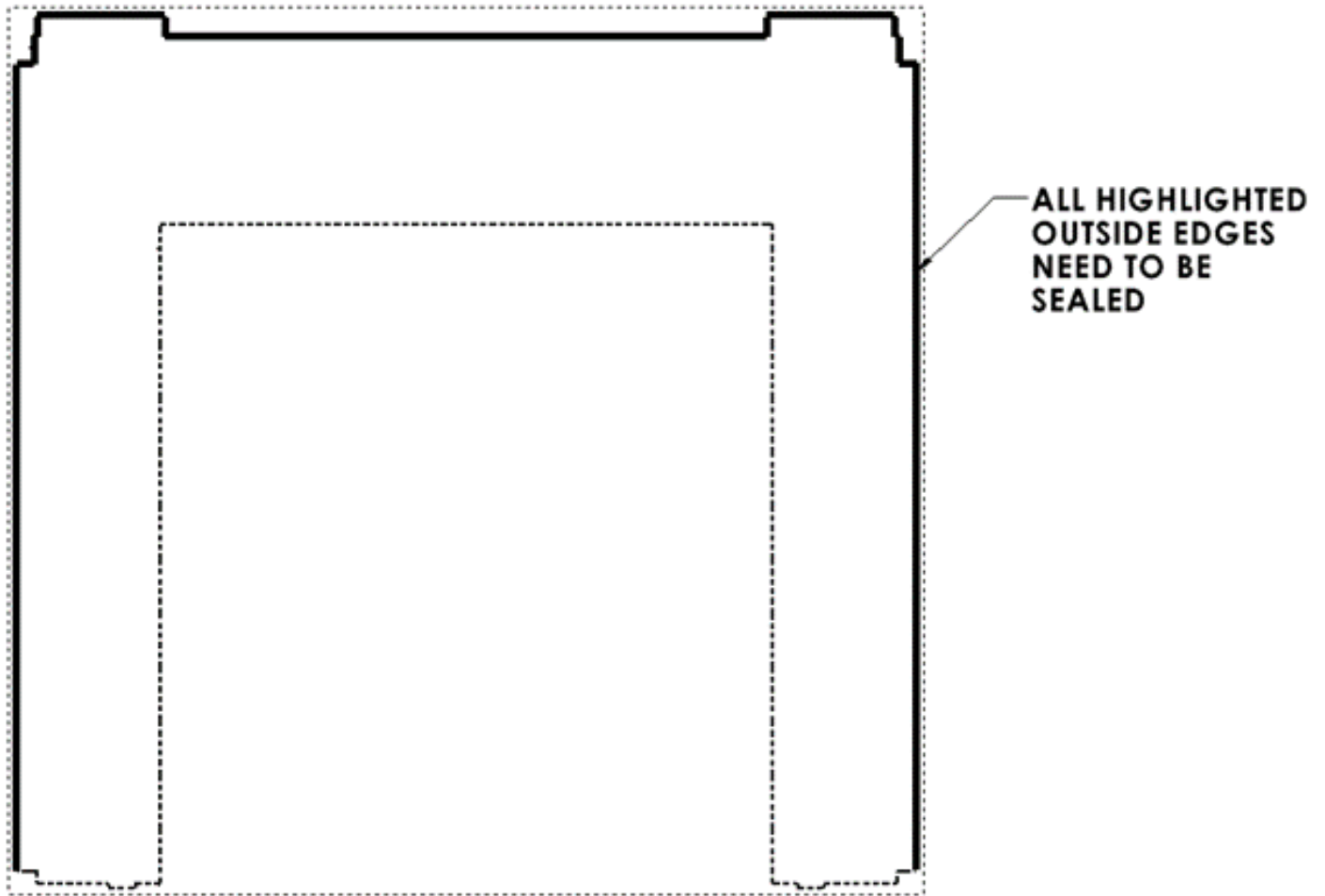


FIGURE 14



W141N9240 Fountain Blvd Menomonee Falls, WI 53051
Phone 262-502-1591 | 800-236-7325
www.novalocks.com