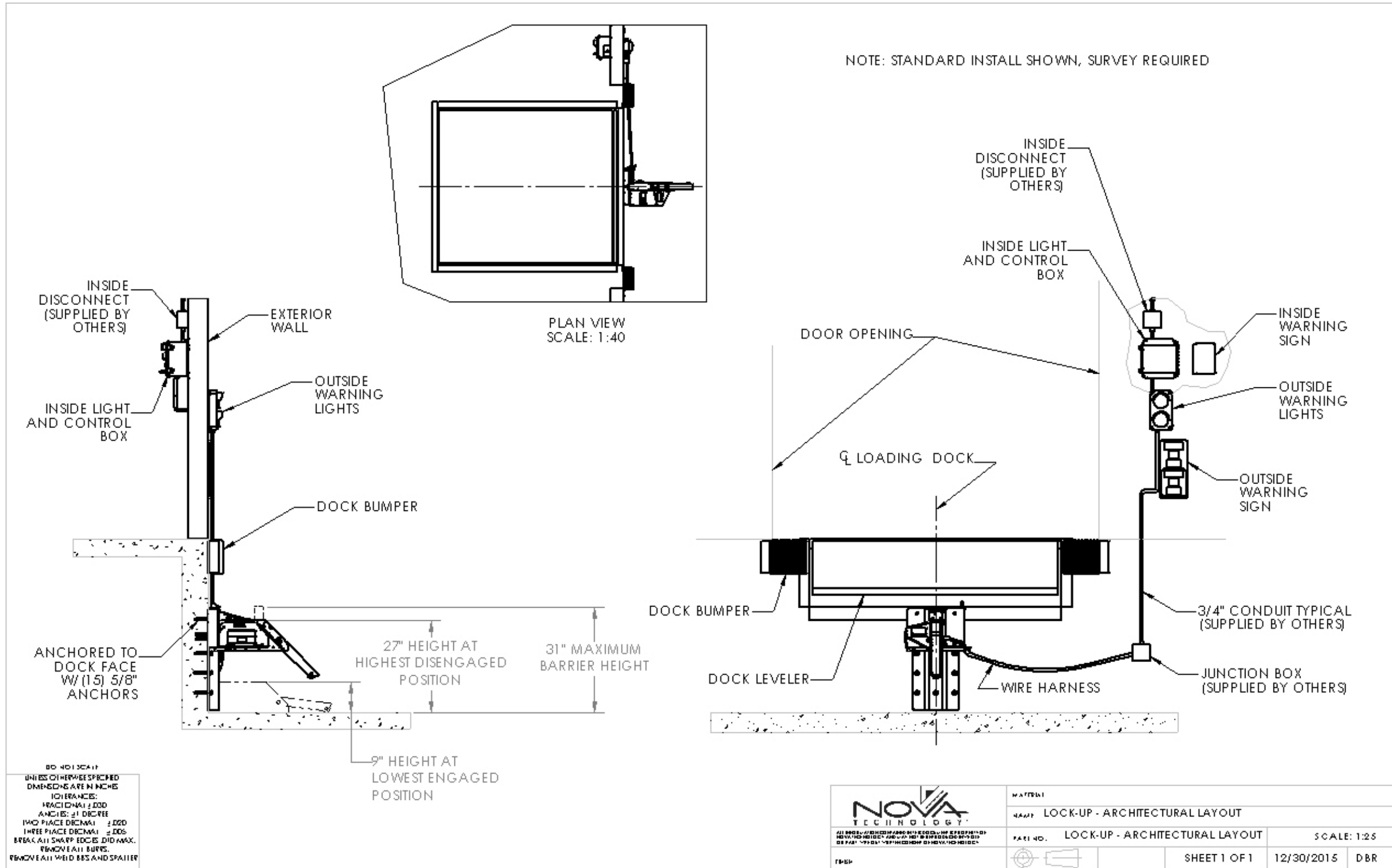


NOVA LOCK-UP™

ARCHITECTURAL DRAWING



NOVA LOCK-UP™



1 – VERTICAL BARRIER
2 – ROLLER TRACK ASSEMBLY
3 – CARRIAGE ASSEMBLY

4 – SLOPE EXTENSION
5 – SPRING MOUNTING PLATE
6 – ROLLER ASSEMBLY

STANDARD FEATURES

- Vertical barrier position secures engagement with intermodal containers and trailer RIG configurations with cover plates or obstructions
- Exclusive designed gear motor operates on electrical current only when engaging or disengaging the vertical barrier with the RIG, resulting in more reliable operation
- Roller Slope Extension that rolls on pavement
- Over 38,000 pounds of restraining force
- LED inside and outside light communication package
- Interior and exterior signage
- Low profile 9" carriage - engagement range 9" to 30" off grade
- Zinc-plated track and housing provides high corrosion resistance
- Standard keyed bypass/override switch

OPTIONAL FEATURES

- Cantilever mounting bracket
- Open dock stanchion for control box
- Driveway plate for ground mounting
- Green light interlock

