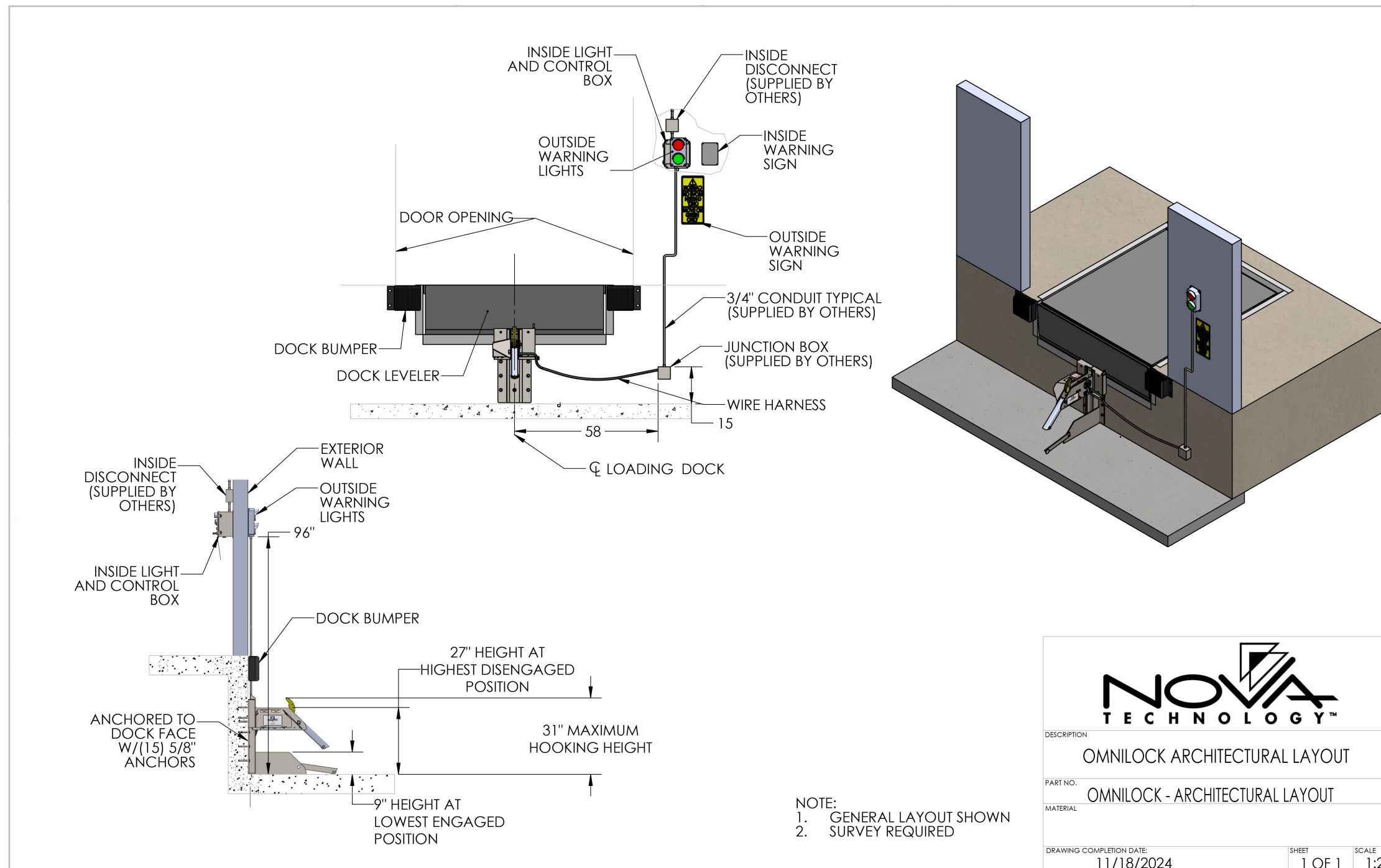


NOVA OMNI-LOCK™

ARCHITECTURAL DRAWING



NOVA TECHNOLOGY™

DESCRIPTION: OMNILOCK ARCHITECTURAL LAYOUT

PART NO.: OMNILOCK - ARCHITECTURAL LAYOUT

MATERIAL:

DRAWING COMPLETION DATE: 11/18/2024

SHEET: 1 OF 1

SCALE: 1:25

NOVA OMNILOCK™



1 – FLOATING HOOK
2 – ROLLER TRACK ASSEMBLY
3 – CARRIAGE ASSEMBLY

4 – SLOPE EXTENSION
5 – SPRING MOUNTING PLATE
6 – ROLLER ASSEMBLY




STANDARD FEATURES

- Floating Hook design enables restraint to overcome instances of “RIG Wedge” by relieving pressure on the hook from the RIG as it disengages
- Secondary engagement mode safely and effectively restrains RIGs with plates including intermodal chassis
- Secures all standard RIG bars, including rectangular, pentagonal, 4-1/2” reinforced RIG bars, and RIG bars with plates, including Intermodal chassis
- Floating Hook is rotationally upward biased and will continuously secure the RIG when a trailer shifts while restrained, even if power is lost
- Floating Hook extends when releasing to ensure proper disengagement from the docked trailer even when “RIG Wedge” occurs
- Automatically resets hook if trailer is not properly restrained
- PLC-based control box provides maintenance diagnostics
- Roller Slope Extension effortlessly rolls on pavement
- Over 32,000-pounds of restraining force
- LED inside and outside light communication package
- Interior and exterior signage
- Low-profile carriage with an engagement range of 9 to 31-inches
- Zinc-plated track and housing provides high corrosion resistance
- Standard bypass and override feature is password-protected for use by authorized personnel only
- The motor is IP67 compliant
- Easy drop-in design enables use in all lock & load style roller tracks (survey required)
- Compatible with interlock and combination control boxes for integration with doors, gates, and levelers

OPTIONAL FEATURES

- IntelliDock Combination control box
- Open dock stanchion for control box
- Articulated slope extension
- Projection brackets and reinforcing plates
- Green light interlock with leveler, door, or gate
- Password protected hook release

 **WARNING:** Cancer and Reproductive Harm-www.P65Warnings.ca.gov