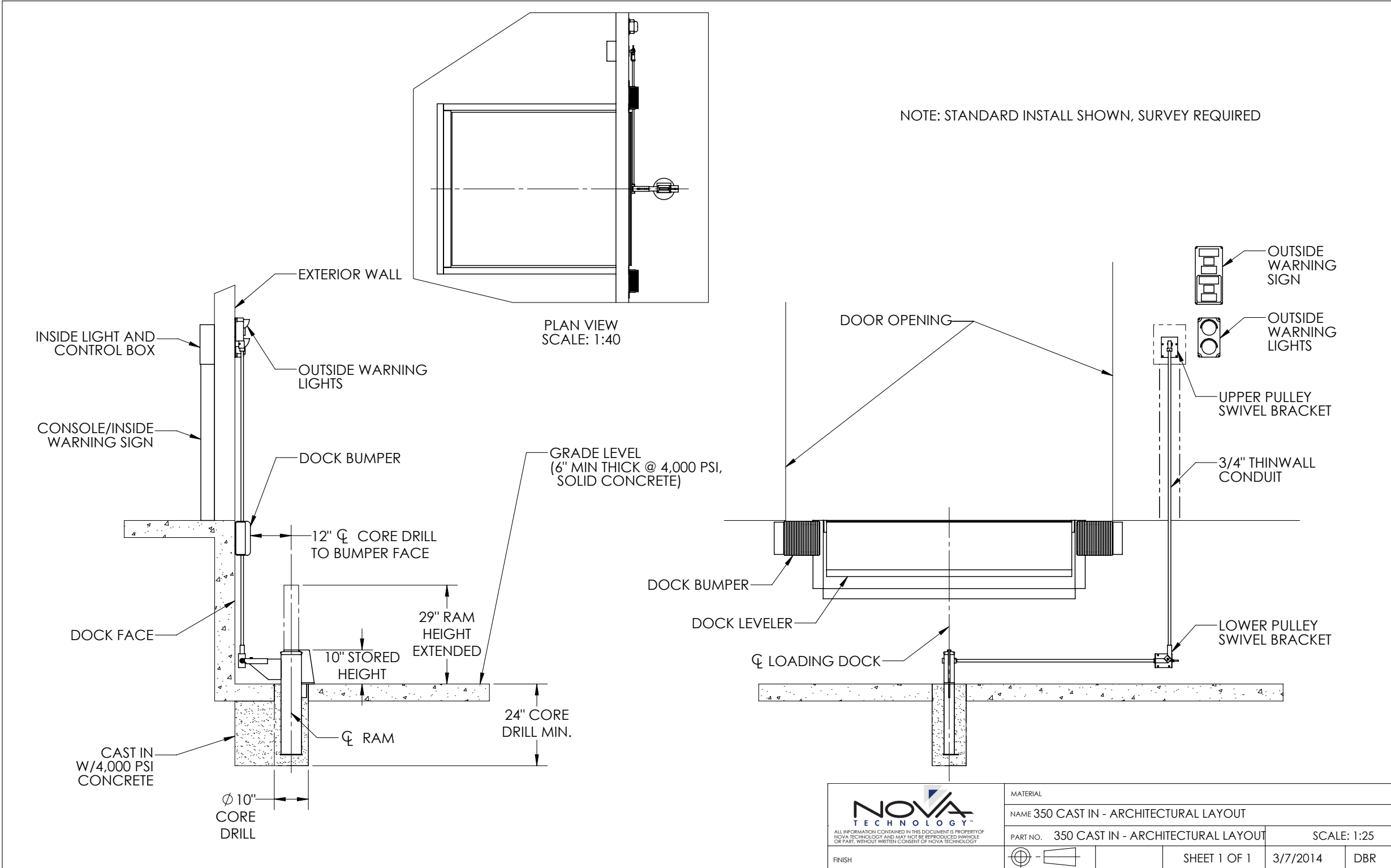


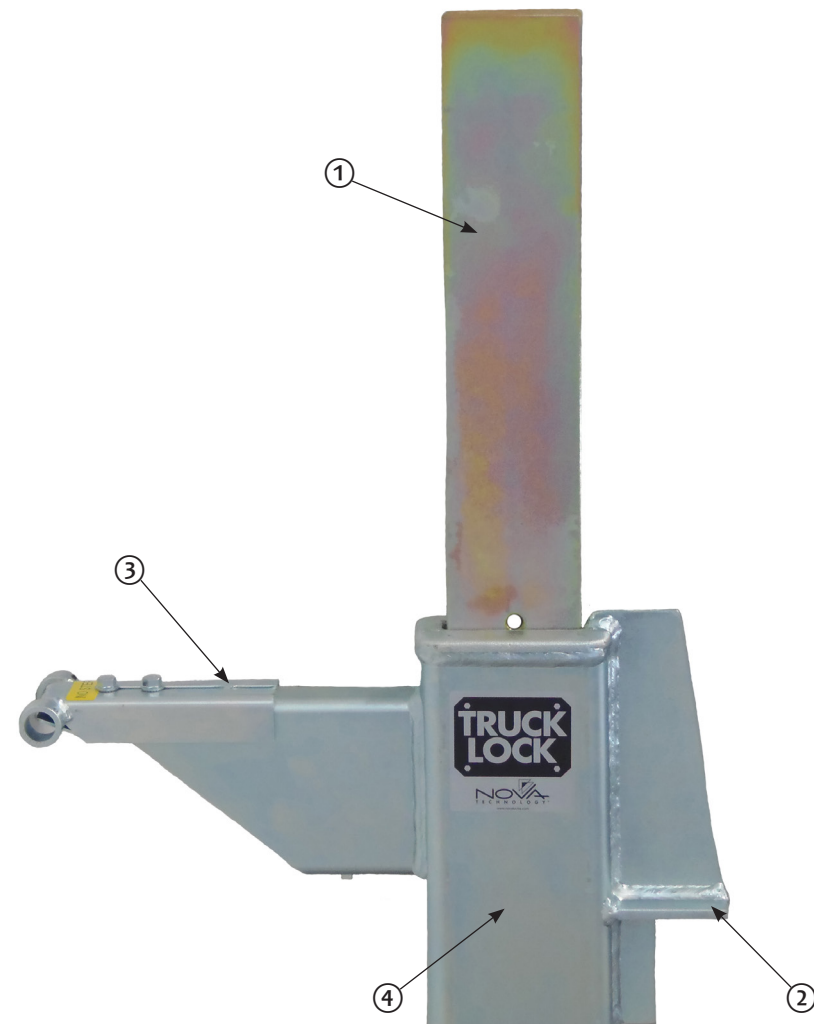
NOVA TRUCK LOCK™ 350 SERIES-CAST-IN STYLE

ARCHITECTURAL DRAWING



NOVA TRUCK LOCK™

350 SERIES CAST-IN STYLE



1 — RAM BAR
2 — SMALL FOOT PRINT

3 — EXTENSION BRACKET
4 — ZINC PLATING

STANDARD FEATURES

- 10" retracted height
- Non-impact design
- Manual or powered versions
- LED inside and outside light communication package
- Can withstand over 30,000 pounds of pull-away force
- Ram bar yield strength of 100,000 psi
- Zinc-plated
- All activation components mounted inside the building
- Low maintenance design, very few moving parts
- Installs at more nontraditional dock types
- Small foot print

OPTIONAL FEATURES

- Compressor/wall bracket
- Truck sensor
- Interconnect with leveler or door
- Interlock with leveler or door
- Open dock stanchion
- Metal building mount kit
- Swivel brackets for unique applications
- Asphalt kit for asphalt or non-concrete approach applications

